

BULOVA[®]
PRICE LIST

JANUARY 1989

**ALPHANUMERICAL
PRICE LISTING**

BULOVA PRICE LIST January 1989

This price list includes information for our June 1988 Full Line Catalog and our new January 1989 Spring Supplement.

PLEASE NOTE: To identify the catalog in which the watches appear, we have coded each catalog as follows:

- A** = June '88 Full Line Catalog
B = January '89 Spring Supplement (New)

*See example below

MODEL NO.	CATALOG PAGE NO.	DESCRIPTION	PRICE
90B46	*B-14	Calendar. Goldtone case. Silvertone bezel ring features gilt Arabic numerals. White dial. Moisture resistant. Dura-Crystal® Grey textured leather strap.	\$135.00

*B-14 = January 1989 Spring Supplement - Page 14

MODEL NO.	CATALOG PAGE NO.	DESCRIPTION	PRICE
90A06	A-71	Goldtone case with black and goldtone bezel ring. Black dial. Moisture resistant. Dura-Crystal® Black leather strap.	\$150.00
90A07	A-65	Marine Star™ Chronograph-alarm with count-down timer. Goldtone stainless steel case and one-way black ratchet bezel ring. Black dial with green markers and "Marine Star" logo. Water resistant to 10 ATM. Dura-Crystal® 3 Chronograph indicators: hour, minute and countdown timer. Black rubber strap.	\$275.00
90B23	A-71	Calendar. Goldtone case with black and goldtone bezel ring. White enamel dial. Moisture resistant. Dura-Crystal® Black leather strap.	\$150.00
90B27	A-66	Marine Star™ Calendar. Stainless steel case and bracelet with goldtone accents. Screw back and screw-down crown. Grey satin sunray dial with "Marine Star" logo circled by black metalized mineral glass bezel. Water resistant to 10 ATM. Dura-Crystal® Center catch.	\$185.00
90B29	A-58		Sold out
90B32	A-59		Sold Out
90B37	A-70	Calendar. Goldtone case with gunmetal accent. Grey pattern dial. Moisture resistant. Dura-Crystal® Dark grey leather strap.	\$175.00
90B38	A-65	Calendar. Stainless steel case with goldtone bezel ring. Gilt patterned dial with "Marine Star" logo. Water resistant to 10 ATM. Dura-Crystal® Two-tone stainless steel link bracelet with fold-over buckle and safety catch.	\$225.00
90B39	A-59	Calendar. Black case with goldtone bezel ring. Black dial. Water resistant to 3 ATM. Dura-Crystal® Black stainless steel link bracelet with goldtone accents and hook-lock clasp.	\$175.00
90B40	A-42	Calendar. Goldtone case with gunmetal bezel ring. Charcoal grey waffle-patterned dial. Moisture resistant. Dura-Crystal® Gunmetal and goldtone stainless steel link bracelet with center catch.	\$265.00

MODEL NO.	CATALOG PAGE NO.	DESCRIPTION	PRICE
90B43	A-61	Calendar. Silvertone case with goldtone bezel ring. Grey dial. Water resistant to 3 ATM. Dura-Crystal® Two-tone link bracelet with fold-over buckle.	\$125.00
90B44	A-40	Gemini® Calendar. Stainless steel case with goldtone bezel ring. Grey dial. Water resistant to 3 ATM. Dura-Crystal® Stainless steel two-tone link bracelet with center catch.	\$235.00
90B45	A-41	Calendar. Stainless steel case with goldtone bezel ring. Grey dial. Water resistant to 3 ATM. Dura-Crystal® Stainless steel two-tone link bracelet with center catch.	\$235.00
90B46	B-14	Calendar. Goldtone case. Silvertone bezel ring features gilt Arabic numerals. White dial. Moisture resistant. Dura-Crystal® Grey textured leather strap.	\$135.00
90C64	A-66	Marine Star™ Day/date. Stainless steel case with goldtone bezel ring. Screw back and screw-down crown. Gilt dial with "Marine Star" logo. Water resistant to 10 ATM. Dura-Crystal® Two-tone stainless steel bracelet with fold-over buckle.	\$175.00
90C67	A-64	Day/date. Stainless steel case with goldtone bezel ring. Champagne sunray dial. Water resistant to 3 ATM. Dura-Crystal® Two-tone stainless steel link bracelet with fold-over safety buckle.	\$125.00
90C68	A-64	Day/date. Two-tone stainless steel case and bracelet. Goldtone bezel design leads to the wire decor on each of the first eight bracelet links. Gilt and silver brush dial. Water resistant to 3 ATM. Dura-Crystal® Hook-lock clasp and safety catch.	\$125.00
90C70	A-62	Day/date. Black stainless steel case and bezel with goldtone accents. Grey speckled dial. Water resistant to 3 ATM. Dura-Crystal® Two-tone stainless steel link bracelet with hook-lock clasp.	\$185.00

MODEL CATALOG NO.	PAGE NO.	DESCRIPTION	PRICE
90C72	A-66	Marine Star™ Diver's watch. Day/date. Two-tone stainless steel case with one way ratchet bezel ring. Black dial with luminous hands and markers. "Marine Star" logo. Water resistant to 10 ATM. Dura-Crystal® Two-tone stainless steel link bracelet with fold-over buckle.	\$195.00
90C74	B-13	Day/date. Silvertone case with two-tone bezel ring. White dial. Water resistant to 3 ATM. Dura-Crystal® Two-tone stainless steel link bracelet with hook-lock.	\$125.00
90D00	A-63	Day/date. Stainless steel case with two-tone bezel ring. Silver dial. Water resistant to 3 ATM. Dura-Crystal® Stainless steel two-tone link bracelet with fold-over buckle.	\$165.00
90D01	A-62	Day/date. Silvertone case with goldtone bezel ring. Silver linen textured dial. Water resistant to 3 ATM. Dura-Crystal® Stainless steel two-tone link bracelet with fold-over buckle.	\$175.00
90E07	A-43	Goldtone stainless steel case with silvertone bezel ring. Silver dial. Water resistant to 3 ATM. Dura-Crystal® Stainless steel two-tone link bracelet with center catch.	\$215.00
90E08	A-45	Silvertone case with goldtone bezel ring. White dial. Water resistant to 3 ATM. Dura-Crystal® Stainless steel expansion bracelet.	\$110.00
90E09	A-25	Silvertone case with goldtone bezel ring. Grey dial. Water resistant to 3 ATM. Dura-Crystal® Stainless steel two-tone link bracelet with fold-over buckle.	\$125.00
90E10	A-25	Silvertone case with goldtone bezel ring. Grey dial. Water resistant to 3 ATM. Dura-Crystal® Stainless steel two-tone link bracelet with fold-over buckle.	\$125.00
90E11	B-11	Goldtone case with silvertone bezel ring. Silver dial. Water resistant to 3 ATM. Dura-Crystal® Two-tone stainless steel link bracelet with fold-over buckle.	\$155.00
90F01	A-7	Signature Group. Diamond overlay. Goldtone case set with 14 diamonds. White dial. Water resistant to 3 ATM. Dura-Crystal® Goldtone stainless steel link bracelet with center catch.	\$650.00
90F02	A-7	Signature Group. Diamond overlay. Goldtone case set with 12 diamonds. Gilt patterned dial. Water resistant to 3 ATM. Dura-Crystal® Goldtone link bracelet with center catch.	\$625.00
90F03	A-28	Diamond overlay. Goldtone case set with six diamonds. Gilt dial. Moisture resistant. Dura-Crystal® Black leather strap.	\$250.00
90F04	A-11	Diamond overlay. Goldtone case set with four diamonds. Gilt dial. Moisture resistant. Dura-Crystal® Goldtone mesh textured bracelet with center catch.	\$275.00
90F05	A-11	Diamond overlay. Goldtone case set with four diamonds. Gilt dial. Moisture resistant. Dura-Crystal® Goldtone mesh textured bracelet with center catch.	\$275.00
90F06	A-11	Diamond overlay. Goldtone case set with four diamonds. Gilt dial. Moisture resistant. Dura-Crystal® Goldtone foxtail patterned bracelet with center catch.	\$265.00
90F07	A-10	Diamond overlay. Goldtone case set with 10 diamonds. Gilt dial. Moisture resistant. Dura-Crystal® Goldtone foxtail patterned bracelet with center catch.	\$350.00
90F08	A-10	Diamond overlay. Goldtone case set with six diamonds. Gilt dial. Moisture resistant. Dura-Crystal® Goldtone bark finish mesh bracelet with center catch.	\$350.00
90F09	A-9	Diamond overlay. Goldtone case set with eight diamonds. Gilt dial. Moisture resistant. Dura-Crystal® Goldtone wire mesh patterned bracelet with center catch.	\$395.00

MODEL CATALOG NO.	PAGE NO.	DESCRIPTION	PRICE
90F10	A-9	Diamond overlay. Goldtone case set with eight diamonds. Gilt dial. Moisture resistant. Dura-Crystal® Goldtone herringbone mesh bracelet with center catch.	\$395.00
90F11	A-8	Diamond overlay. Goldtone case set with 12 diamonds. Gilt dial. Moisture resistant. Dura-Crystal® Goldtone woven bracelet with center catch.	\$425.00
90F12	A-30	Diamond overlay. Goldtone case set with six diamonds. Gilt dial. Moisture resistant. Dura-Crystal® Goldtone link bracelet with center catch.	\$395.00
90F13	A-9	Diamond overlay. Goldtone stainless steel case set with 12 diamonds. Gilt dial. Moisture resistant. Dura-Crystal® Goldtone spiral mesh patterned bracelet with center catch.	\$375.00
90F14	A-10	Diamond overlay. Goldtone stainless steel case set with 10 diamonds. Gilt patterned dial. Moisture resistant. Dura-Crystal® Goldtone spiral mesh patterned bracelet with center catch.	\$350.00
90F15	A-11	Diamond overlay. Goldtone case set with eight diamonds. Gilt dial. Moisture resistant. Dura-Crystal® Goldtone link bracelet with center catch.	\$295.00
90F16	A-10	Diamond overlay. Goldtone case set with 10 diamonds. Gilt dial. Moisture resistant. Dura-Crystal® Goldtone tubular link bracelet with center catch.	\$325.00
90F17	A-10	Diamond overlay. Goldtone case set with six diamonds. Black dial. Moisture resistant. Dura-Crystal® Goldtone tubular link bracelet with center catch.	\$325.00
90F18	B-4	Diamond Caresse® Goldtone case set with eight diamonds. Black dial. Moisture resistant. Dura-Crystal® Goldtone stainless steel spiral mesh bracelet with center catch.	\$265.00
90F19	B-4	Diamond overlay. Goldtone case set with four diamonds. Gilt dial. Moisture resistant. Dura-Crystal® Goldtone stainless steel spiral mesh bracelet with center catch.	\$295.00
90F20	B-4	Diamond overlay. Goldtone case set with six diamonds. Black dial. Moisture resistant. Dura-Crystal® Goldtone stainless steel spiral mesh bracelet with center catch.	\$295.00
90F21	B-3	Diamond overlay. Goldtone case set with six diamonds. Gilt dial. Moisture resistant. Dura-Crystal® Goldtone woven link bracelet with center catch.	\$375.00
90F22	B-3	Diamond overlay. Goldtone case set with six diamonds. Gilt dial. Moisture resistant. Dura-Crystal® Goldtone woven link bracelet with center catch.	\$375.00
90F23	B-3	Diamond overlay. Goldtone case set with eight diamonds. Black dial. Moisture resistant. Dura-Crystal® Goldtone fashion link bracelet with center catch.	\$425.00
90F24	B-3	Diamond overlay. Goldtone case set with eight diamonds. Gilt dial. Moisture resistant. Dura-Crystal® Goldtone fashion link bracelet with center catch.	\$395.00
90F26	B-9	Diamond overlay. Goldtone case set with 16 diamonds. Gilt dial. Moisture resistant. Dura-Crystal® Goldtone fashion link bracelet with center catch.	\$595.00
90G12	B-6	Marine Star™ Calendar. Silvertone case with goldtone bezel ring and black numbers. Grey dial features "Marine Star" logo and luminous hands and markers. Screw back. Water resistant to 10 ATM. Dura-Crystal® Two-tone stainless steel link bracelet with fold-over buckle.	\$175.00

MODEL CATALOG NO.	PAGE NO.	DESCRIPTION	PRICE
90G13	B-6	Marine Star™ Calendar. Goldtone stainless steel case with one-way counter clockwise ratchet bezel ring with compass headings. Screw back. Black dial features "Marine Star" logo and luminous hands and markers. Water resistant to 10 ATM. Dura-Crystal® Goldtone stainless steel link bracelet with fold-over buckle and safety lock.	\$195.00
90H00	B-8	Silvertone case with goldtone bezel ring. Silver dial. Moisture resistant. Dura-Crystal® Stainless steel spiral mesh bracelet with center catch.	\$ 99.95
90H01	B-7	Silvertone case with goldtone bezel ring. Black dial. Moisture resistant. Dura-Crystal® Two-tone stainless steel fashion link bracelet with center catch.	\$165.00
90H02	B-7	Silvertone case with goldtone bezel ring. Gilt dial. Moisture resistant. Dura-Crystal® Two-tone stainless steel fashion link bracelet with center catch.	\$165.00
90L33	A-46		Sold Out
90L50	A-41	Two-tone case and link bracelet. Gilt dial. Moisture resistant. Dura-Crystal® Center catch.	\$225.00
90L52	A-13	Diamond Caresse® Goldtone case set with two diamonds. Gilt dial. Moisture resistant. Dura-Crystal® Goldtone stainless steel mesh bracelet with center catch.	\$195.00
90L53	A-12	Diamond Caresse® Goldtone case set with four diamonds. Gilt bark finish dial. Moisture resistant. Dura-Crystal® Goldtone stainless steel mesh patterned bracelet with center catch.	\$215.00
90L54	A-13	Diamond Caresse® Goldtone case set with four diamonds. Gilt dial. Moisture resistant. Dura-Crystal® Goldtone stainless steel mesh patterned bracelet with center catch.	\$215.00
90L55	A-12	Diamond Caresse® Goldtone case set with four diamonds. Gilt dial. Moisture resistant. Dura-Crystal® Goldtone stainless steel mesh patterned bracelet with center catch.	\$235.00
90L56	A-12	Diamond Caresse® Goldtone case set with six diamonds. Gilt dial. Moisture resistant. Dura-Crystal® Goldtone stainless steel mesh patterned bracelet with center catch.	\$275.00
90L57	A-12	Diamond Caresse® Goldtone case set with eight diamonds. Gilt dial. Moisture resistant. Dura-Crystal® Goldtone stainless steel mesh patterned bracelet with center catch.	\$295.00
90L58	A-8	Diamond overlay. Goldtone case set with six diamonds. Cream enamel dial. Moisture resistant. Dura-Crystal® Goldtone link bracelet with center catch.	\$395.00
90L59	A-8	Diamond overlay. Goldtone case set with 10 diamonds. Gilt sunray dial. Moisture resistant. Dura-Crystal® Goldtone patterned mesh bracelet with center catch.	\$425.00
90L60	A-8	Diamond overlay. Goldtone case set with eight diamonds. Grey dial. Moisture resistant. Dura-Crystal® Goldtone patterned link bracelet with center catch.	\$395.00
90L61	A-42	Goldtone case with gunmetal bezel ring. Charcoal grey waffle-patterned dial. Moisture resistant. Dura-Crystal® Gunmetal and goldtone stainless steel link bracelet with center catch.	\$235.00
90L62	A-40	Gemini® Stainless steel case with goldtone bezel ring. Grey dial. Water resistant to 3 ATM. Dura-Crystal® Stainless steel two-tone link bracelet with center catch.	\$225.00
90L63	A-41	Stainless steel case with goldtone bezel ring. Grey dial. Water resistant to 3 ATM. Dura-Crystal® Stainless steel two-tone link bracelet with center catch.	\$225.00

MODEL CATALOG NO.	PAGE NO.	DESCRIPTION	PRICE
90L64	A-48	Goldtone case with silvertone bezel ring. White dial. Moisture resistant. Black leather strap.	\$115.00
90L65	B-4	Diamond overlay. Goldtone case, in-the-round, is set with eight diamonds. Gilt dial. Moisture resistant. Dura-Crystal® Goldtone stainless steel bark finish bracelet with silvertone edges and center catch.	\$225.00
90L66	B-4	Diamond overlay. Goldtone marquise-shaped case set with eight diamonds. Gilt dial. Moisture resistant. Dura-Crystal® Goldtone stainless steel bark finish bracelet with silvertone edges and center catch.	\$225.00
90L67	B-4	Diamond overlay. Goldtone oval-shaped case set with eight diamonds. Gilt dial. Moisture resistant. Dura-Crystal® Goldtone stainless steel bark finish bracelet with silvertone edges and center catch.	\$225.00
90M05	A-50	Diamond overlay. Goldtone case with white bezel ring framed by 20 diamonds. Gilt patterned dial. Moisture resistant. Dura-Crystal® Goldtone link bracelet with center catch.	\$595.00
90M07	A-50	Diamond overlay. Goldtone case set with 12 diamonds. Black patterned dial. Moisture resistant. Dura-Crystal® Goldtone diamond-cut mesh bracelet with center catch.	\$550.00
90M11	A-46		Sold Out
90M17	A-41	Two-tone case and link bracelet. Gilt dial. Moisture resistant. Dura-Crystal® Center catch.	\$250.00
90M19	A-48	Goldtone case with silvertone bezel ring. White dial. Moisture resistant. Dura-Crystal® Black leather strap.	\$125.00
90M20	A-56	Stainless steel two-tone case. Grey dial. Water resistant to 3 ATM. Dura-Crystal® Stainless steel two-tone link bracelet with fold-over buckle.	\$265.00
90M21	A-56	Stainless steel two-tone case. Black dial. Water resistant to 3 ATM. Dura-Crystal® Stainless steel two-tone link bracelet with fold-over buckle.	\$265.00
90N01	A-7	Signature Group. Diamond overlay. Goldtone case set with 20 diamonds. White dial. Water resistant to 3 ATM. Dura-Crystal® Goldtone stainless steel link bracelet with center catch.	\$695.00
90N02	A-7		Sold out
90N04	A-50	Diamond overlay. Goldtone case set with 16 diamonds. Black dial. Water resistant to 3 ATM. Dura-Crystal® Goldtone link bracelet with center catch.	\$575.00
90N05	A-30	Diamond overlay. Goldtone case set with eight diamonds. Gilt dial. Moisture resistant. Dura-Crystal® Goldtone link bracelet with center catch.	\$450.00
90N06	A-51	Diamond overlay. Silvertone case with 12 diamonds set on goldtone bezel. Black dial. Moisture resistant. Dura-Crystal® Stainless steel two-tone link bracelet with center catch.	\$395.00
90N07	A-69	Diamond dial. Goldtone case with goldtone bezel ring. Black dial set with one diamond. Moisture resistant. Dura-Crystal® Black leather strap.	\$175.00
90N08	B-9	Diamond overlay. Goldtone case set with 26 diamonds. Gilt dial. Moisture resistant. Dura-Crystal® Goldtone fashion link bracelet with center catch.	\$675.00
90N09	B-12	Diamond overlay. Goldtone stainless steel case set with eight diamonds. Black dial. Moisture resistant. Dura-Crystal® Goldtone stainless steel fashion link bracelet with center catch.	\$495.00
90S00	A-60	Calendar. Goldtone case with gunmetal bezel ring. Two-tone black dial. Water resistant to 3 ATM. Dura-Crystal® Stainless steel two-tone link bracelet with center catch.	\$165.00

MODEL NO.	CATALOG PAGE NO.	DESCRIPTION	PRICE
90S01	A-58	Calendar. Stainless steel case with goldtone bezel ring. Grey dial. Water resistant to 3 ATM. Dura-Crystal® Stainless steel two-tone link bracelet with fold-over buckle.	\$225.00
90S02	A-65	Marine Star™ Diver's watch. Calendar. Black stainless steel case and two-tone bezel ring with screw back and screw-down crown. Black dial with "Marine Star" logo and luminous hands and markers. Water resistant to 10 ATM. Dura-Crystal® Stainless steel two-tone link bracelet with fold-over buckle.	\$215.00
90S03	A-65	Marine Star™ Diver's watch. Calendar. Gold-tone stainless steel case and two-tone bezel ring with screw back and screw-down crown. Black dial with "Marine Star" logo and luminous hands and markers. Water resistant to 10 ATM. Dura-Crystal® Goldtone stainless steel link bracelet with fold-over buckle.	\$215.00
90S04	A-59	Calendar. Gunmetal stainless steel case with goldtone bezel ring. Gilt speckled dial. Water resistant to 5 ATM. Dura-Crystal® Two-tone stainless steel bracelet with fold-over buckle.	\$175.00
90S05	A-45	Calendar. Silvertone case with goldtone bezel ring. White dial. Water resistant to 3 ATM. Dura-Crystal® Stainless steel expansion bracelet.	\$125.00
90S06	A-43	Calendar. Goldtone stainless steel case with silvertone bezel ring. Silver dial. Water resistant to 3 ATM. Dura-Crystal® Stainless steel two-tone link bracelet with center catch.	\$225.00
90S07	A-58	Calendar. Stainless steel case with goldtone bezel ring. White dial. Water resistant to 3 ATM. Dura-Crystal® Stainless steel two-tone link bracelet with center catch.	\$215.00
90S09	B-13	Calendar. Two-tone case with goldtone bezel ring. Gilt dial. Water resistant to 3 ATM. Dura-Crystal® Two-tone stainless steel link bracelet with fold-over buckle.	\$175.00
90S10	B-11	Calendar. Goldtone case with silvertone bezel ring. Silver dial. Water resistant to 3 ATM. Dura-Crystal® Two-tone stainless steel link bracelet with fold-over buckle.	\$165.00
90T05	A-8		Sold out
90T06	A-9		Sold out
90T07	A-11	Diamond overlay. Goldtone case set with six diamonds. Gilt dial. Moisture resistant. Dura-Crystal® Narrow goldtone link bracelet with center catch.	\$325.00
90T08	A-8	Diamond overlay. Goldtone case set with 24 diamonds. Gilt dial. Moisture resistant. Dura-Crystal® Goldtone link bracelet with center catch.	\$475.00
90T09	A-9	Diamond overlay. Goldtone case set with 10 diamonds. Gilt dial. Moisture resistant. Dura-Crystal® Goldtone stitched link bracelet in a matte finish with center catch.	\$365.00
90T10	A-30	Diamond overlay. Goldtone case set with 10 diamonds. Black matte dial. Moisture resistant. Dura-Crystal® Intricately patterned goldtone link bracelet with center catch.	\$495.00
91A05	B-14	20th Century Ltd® Silvertone case. Black dial. Moisture resistant. Dura-Crystal® Black leather strap.	\$115.00
91B18	A-58	Calendar. Stainless steel case. White enamel dial with grey border. Water resistant to 3 ATM. Dura-Crystal® Stainless steel link bracelet with center catch.	\$195.00
91C06	A-67	Railroad watch. Day/date. Stainless steel case and link bracelet. White enamel 24-hour dial. Water resistant to 3 ATM. Dura-Crystal® Fold-over buckle and safety lock.	\$135.00

MODEL NO.	CATALOG PAGE NO.	DESCRIPTION	PRICE
91C13	A-64	Day/date. Stainless steel case and bracelet. Silver sunray dial. Water resistant to 3 ATM. Dura-Crystal® Fold-over buckle and safety lock.	\$115.00
91C15	A-63		Sold out
91C16	A-64	Day/date. Stainless steel case and bracelet. Silver textured dial. Water resistant to 3 ATM. Dura-Crystal® Hook-lock clasp and safety catch.	\$115.00
91C17	A-45	Day/date. Silvertone case. White enamel dial. Water resistant to 3 ATM. Dura-Crystal® Stainless steel expansion bracelet with bright and textured finish.	\$115.00
91C18	A-66	Marine Star™ Diver's watch. Day/date. Black stainless steel case with screw back and screw-down crown. One way ratchet bezel. Black dial with "Marine Star" logo and tritium markers. Water resistant to 20 ATM. Dura-Crystal® Black rubber strap with goldtone stainless steel buckle.	\$175.00
91C20	A-71	Day/date. Silvertone case. Silvertone dial. Water resistant to 3 ATM. Dura-Crystal® Black leather strap.	\$99.95
91E03	A-27	Silvertone case. Silver satin dial. Moisture resistant. Dura-Crystal® Rhodium stainless steel mesh bracelet with center catch.	\$115.00
91E04	A-27		Sold out
91E06	A-27	Silvertone case. Silver satin dial. Moisture resistant. Dura-Crystal® Rhodium stainless steel mesh bracelet with center catch.	\$115.00
91E07	A-45	Silvertone case. White enamel dial. Water resistant to 3 ATM. Dura-Crystal® Stainless steel expansion bracelet with bright and textured finish.	\$99.95
91G01	B-8	Day/date. 24-Hour dial. Stainless steel case and bezel ring. Screw back. White dial features a red 24-hour readout. Water resistant to 3 ATM. Dura-Crystal® Stainless steel link bracelet with fold-over buckle.	\$125.00
91L08	A-27	Silvertone case with braided bezel design. Silver patterned dial. Tapered mesh bracelet with center catch.	\$160.00
91L09	A-13	Diamond Caresse® Silvertone case set with two diamonds on beaded bezel. White satin sunray dial. Moisture resistant. Stainless steel mesh bracelet with center catch.	\$175.00
91L11	A-27		Sold out
91L12	A-27		Sold Out
91L13	A-27	Silvertone case. Silver dial. Moisture resistant. Dura-Crystal® Silvertone tubular link bracelet with center catch.	\$125.00
91L14	A-27	Silvertone case. Silver dial. Moisture resistant. Dura-Crystal® Silvertone tubular link bracelet with center catch.	\$125.00
91M00	A-70		Sold out
91S00	B-13	Marine Star™ Calendar. Stainless steel case and counter clockwise rotating bezel ring. Screw back. Black dial features "Marine Star" logo and luminous hands and markers. Water resistant to 10 ATM. Dura-Crystal® Stainless steel link bracelet with fold-over buckle.	\$175.00
92A27	A-53	Diamond dial. Goldtone case. Black dial set with one diamond. Water resistant to 3 ATM. Dura-Crystal® Goldtone stainless steel bracelet with hook-lock clasp.	\$195.00
92A35	A-68		Sold out
92A36	A-71		Sold Out
92A37	A-70		Sold out
92A40	A-70		Sold Out
92A42	A-70	Goldtone case. Gilt textured dial. Dura-Crystal® Tan leather strap.	\$175.00

MODEL CATALOG NO.	PAGE NO.	DESCRIPTION	PRICE
92A43	A-47		Sold Out
92A45	A-70		Sold out
92A47	A-46	Goldtone case with raised bezel ring. White patterned dial. Moisture resistant. Dura-Crystal® Black leather strap.	\$145.00
92A48	A-46	Goldtone case with black bezel ring. Black patterned dial. Moisture resistant. Dura-Crystal® Black leather strap.	\$145.00
92A70	A-38	Goldtone case. Gilt dial. Water resistant to 3 ATM. Dura-Crystal® Goldtone stainless steel link bracelet with center catch.	\$295.00
92A73	A-49	20th Century Ltd® Goldtone case and bezel ring. White dial with mini-sweep. Moisture resistant. Black leather strap.	\$135.00
92A74	A-49	20th Century Ltd® Goldtone case. Silver dial with mini-sweep. Moisture resistant. Brown leather strap.	\$135.00
92A75	A-49	20th Century Ltd® Goldtone case and bezel ring. White dial features green numerals and mini-sweep. Moisture resistant. Curved Dura-Crystal® Butterscotch leather strap.	\$135.00
92A76	A-49	20th Century Ltd® Rosetone case. Rose and gilt dial features mini-sweep. Moisture resistant. Brown leather strap.	\$135.00
92A80	B-14	20th Century Ltd® Goldtone case. Rosetone dial with mini-sweep second. Moisture resistant. Dura-Crystal® Brown textured leather strap.	\$125.00
92A81	B-14	20th Century Ltd® Goldtone case. White dial with mini-sweep second. Moisture resistant. Dura-Crystal® Brown leather strap.	\$150.00
92B15	A-61	Calendar. Goldtone case. Gilt brush radial dial. Water resistant to 3 ATM. Dura-Crystal® Goldtone bracelet with hook-lock clasp.	\$125.00
92B30	A-68		Sold Out
92B49	A-70	Calendar. Goldtone case. Gilt patterned dial. Moisture resistant. Dura-Crystal® Beige leather strap.	\$175.00
92B50	A-38	Calendar. Goldtone stainless steel case. Gilt patterned dial. Water resistant to 3 ATM. Dura-Crystal® Goldtone stainless steel link bracelet with center catch.	\$285.00
92B52	A-68	Masonic watch. Calendar. Goldtone case. Gilt dial with Masonic logo. Water resistant to 3 ATM. Dura-Crystal® Goldtone stainless steel link bracelet with hook-lock clasp.	\$185.00
92B53	A-61		Sold Out
92B54	A-60		Sold Out
92B55	A-59	Calendar. Goldtone case. Gilt and champagne textured dial. Water resistant to 3 ATM. Dura-Crystal® Goldtone stainless steel link bracelet with polished edging and center catch.	\$185.00
92B63	A-59	Calendar. Goldtone case. Two-tone gilt brush and sunray dial. Water resistant to 3 ATM. Dura-Crystal® Goldtone stainless steel link bracelet with fold-over buckle.	\$175.00
92B64	A-60	Calendar. Goldtone case. Champagne dial. Water resistant to 3 ATM. Dura-Crystal® Goldtone stainless steel link bracelet with fold-over buckle.	\$165.00
92B65	A-68	Pocket watch. Calendar. Goldtone case. Gilt patterned dial. Dura-Crystal®	\$175.00
92B66	A-59	Calendar. Goldtone case. Gilt dial. Water resistant to 3 ATM. Dura-Crystal® Goldtone stainless steel link bracelet with hook-lock clasp.	\$175.00
92B67	A-44	Calendar. Goldtone case. Black dial with three horizontal gilt lines. Water resistant to 3 ATM. Dura-Crystal® Goldtone stainless steel link bracelet with bright edging and center catch.	\$215.00
92B68	A-42		Sold Out

MODEL CATALOG NO.	PAGE NO.	DESCRIPTION	PRICE
92B73	A-68	Calendar. Goldtone case and bezel ring. White enamel dial. Water resistant to 3 ATM. Dura-Crystal® Goldtone stainless steel patterned expansion bracelet.	\$115.00
92B74	A-61	Calendar. Goldtone case and bezel ring. Gilt dial. Water resistant to 3 ATM. Dura-Crystal® Goldtone stainless steel link bracelet with fold-over buckle.	\$135.00
92B75	A-61	Calendar. Goldtone case and bezel ring. Gilt dial. Water resistant to 3 ATM. Dura-Crystal® Goldtone stainless steel link bracelet with fold-over buckle.	\$135.00
92B76	A-40	Gemini® Calendar. Goldtone stainless steel case and bezel ring. Gilt dial. Water resistant to 3 ATM. Dura-Crystal® Goldtone stainless steel link bracelet with center catch.	\$250.00
92B77	A-41	Calendar. Goldtone stainless steel case and bezel ring. Gilt dial. Water resistant to 3 ATM. Dura-Crystal® Goldtone stainless steel link bracelet with center catch.	\$250.00
92B78	A-40	Gemini® Goldtone stainless steel case and bezel ring. Gilt dial. Water resistant to 3 ATM. Dura-Crystal® Goldtone stainless steel link bracelet with center catch.	\$250.00
92B84	B-14	Dual time zone. Calendar. Goldtone case. Ivory dial features 2 multi-colored circular tracks for home and second zone time. Water resistant to 3 ATM. Dura-Crystal® Brown leather strap.	\$135.00
92D23	A-62		Sold out
92D24	A-64	Day/date. Goldtone stainless steel case and bracelet. Gilt sunray dial. Water resistant to 3 ATM. Dura-Crystal® Fold-over buckle.	\$135.00
92D25	A-66	Marine Star™ Day/date. Goldtone stainless steel case and bezel ring. Screw back and screw-down crown. Gilt dial with "Marine Star" logo. Water resistant to 10 ATM. Dura-Crystal® Goldtone stainless steel bracelet with fold-over buckle.	\$185.00
92D26	A-67	Railroad watch. Day/date. Goldtone stainless steel case and link bracelet. White enamel 24-hour dial. Water resistant to 3 ATM. Dura-Crystal® Fold-over buckle and safety lock.	\$150.00
92D28	A-63	Day/date. Goldtone case. Two-tone gilt dial. Water resistant to 3 ATM. Dura-Crystal® Goldtone stainless steel bracelet with sliding clasp.	\$160.00
92D29	A-62		Sold out
92D30	A-64	Day/date. Goldtone case. Gilt dial. Water resistant to 3 ATM. Dura-Crystal® Goldtone stainless steel link bracelet with hook-lock clasp.	\$135.00
92D32	A-45	Day/date. Goldtone case. Gilt dial. Water resistant to 3 ATM. Dura-Crystal® Goldtone stainless steel expansion bracelet with bright and textured finish.	\$125.00
92D33	A-63		Sold out
92D34	A-62	Day/date. Goldtone stainless steel case and link bracelet. Gilt dial. Water resistant to 3 ATM. Dura-Crystal® Hook-lock clasp.	\$175.00
92D36	A-66	Marine Star™ Diver's watch. Day/date. Goldtone stainless steel case with one way ratchet bezel ring. Black dial with luminous hands and markers. "Marine Star" logo. Water resistant to 10 ATM. Dura-Crystal® Goldtone stainless steel link bracelet with fold-over buckle.	\$215.00
92D37	A-68	Day/date. Goldtone case and bezel ring. Gilt dial. Water resistant to 3 ATM. Dura-Crystal® Goldtone stainless steel patterned expansion bracelet.	\$125.00

MODEL CATALOG NO.	PAGE NO.	DESCRIPTION	PRICE
92D38	A-67	Day/date. Goldtone case and bezel ring. Gilt dial features 3 circular track counters: day, date and mini-second. Water resistant to 3 ATM. Dura-Crystal® Goldtone link bracelet with center catch.	\$185.00
92D39	A-67	Day/date. Goldtone case and bezel ring. White dial features 3 circular track counters: day, date and mini-second. Water resistant to 3 ATM. Dura-Crystal® Black leather strap.	\$165.00
92D40	A-71	Day/date. Goldtone case. Gilt dial. Water resistant to 3 ATM. Dura-Crystal® Black leather strap.	\$115.00
92D41	A-71	Day/date. Goldtone case. Gilt dial. Water resistant to 3 ATM. Dura-Crystal® Black leather strap.	\$115.00
92D42	A-63	Day/date. Goldtone stainless steel case and double bezel ring. Gilt dial. Water resistant to 3 ATM. Dura-Crystal® Goldtone stainless steel link bracelet with fold-over buckle.	\$175.00
92D43	A-63	Day/date. Goldtone stainless steel case and bezel ring. Gilt dial. Water resistant to 3 ATM. Dura-Crystal® Goldtone stainless steel link bracelet with fold-over buckle.	\$150.00
92D44	A-62	Day/date. Goldtone case and bezel ring. White dial. Water resistant to 3 ATM. Dura-Crystal® Goldtone stainless steel link bracelet with fold-over buckle.	\$185.00
92D45	A-65	Marine Star™ Diver's watch. Day/date. Goldtone stainless steel case and one-way ratchet bezel ring. Screw back and screw-down crown. White dial with "Marine Star" logo. Water resistant to 10 ATM. Dura-Crystal® Goldtone stainless steel link bracelet with fold-over buckle.	\$250.00
92D46	A-67		Sold out
92D47	A-67	Day/date. Dual time zone. Military time. Goldtone stainless steel case and one-way counter-clockwise ratchet bezel ring. White dial features 4 circular track counters: day, military time, date and dual time. Water resistant to 3 ATM. Dura-Crystal® Goldtone stainless steel link bracelet with fold-over buckle.	\$195.00
92D50	B-13	Day/date. Goldtone case and bezel ring. Gilt dial. Water resistant to 3 ATM. Dura-Crystal® Goldtone stainless steel link bracelet with hook-lock.	\$135.00
92D51	B-13	Day/date. Goldtone case and bezel ring. Black dial with gilt Arabic numerals. Water resistant to 3 ATM. Dura-Crystal® Goldtone stainless steel link bracelet with fold-over buckle.	\$175.00
92E30	A-24	Goldtone case. Gilt dial. Moisture resistant. Dura-Crystal® Goldtone stainless steel bracelet with center catch.	\$135.00
92E43	A-25	Goldtone case. Champagne dial. Moisture resistant. Dura-Crystal® Goldtone stainless steel bracelet with center catch.	\$135.00
92E44	A-45	Goldtone case. Gilt dial. Water resistant to 3 ATM. Dura-Crystal® Goldtone stainless steel expansion bracelet with bright and textured finish.	\$115.00
92E47	A-29	Goldtone case. Black dial with gilt speckling. Moisture resistant. Dura-Crystal® Black leather strap.	\$135.00
92E49	A-47	Goldtone case. Gilt dial. Moisture resistant. Dura-Crystal® Tan leather strap.	\$145.00
92E53	A-46	Goldtone case with raised bezel ring. White patterned dial. Moisture resistant. Dura-Crystal® Black leather strap.	\$135.00
92E54	A-46	Goldtone case with black bezel ring. Black patterned dial. Moisture resistant. Dura-Crystal® Black leather strap.	\$135.00

MODEL CATALOG NO.	PAGE NO.	DESCRIPTION	PRICE
92E55	A-44	Goldtone case. Black dial with three horizontal gilt lines. Water resistant to 3 ATM. Dura-Crystal® Goldtone stainless steel link bracelet with bright edging and center catch.	\$195.00
92E61	A-25	Goldtone case. Gilt dial. Moisture resistant. Dura-Crystal® Goldtone stainless steel mesh textured bracelet with center catch.	\$125.00
92E62	A-26	Goldtone case. White dial. Moisture resistant. Dura-Crystal® Goldtone stainless steel mesh bracelet with center catch.	\$125.00
92E63	A-38	Goldtone case. Gilt dial. Water resistant to 3 ATM. Dura-Crystal® Goldtone stainless steel link bracelet with center catch.	\$275.00
92E64	A-43	Goldtone stainless steel case and bezel ring. Gilt dial. Water resistant to 3 ATM. Dura-Crystal® Goldtone stainless steel link bracelet with center catch.	\$225.00
92E65	A-45	Goldtone case and bezel ring. Gilt dial. Water resistant to 3 ATM. Dura-Crystal® Goldtone stainless steel expansion bracelet.	\$125.00
92E66	A-26	Goldtone case. Gilt dial. Moisture resistant. Dura-Crystal® Goldtone stainless steel spiral mesh patterned bracelet with center catch.	\$125.00
92E67	A-26	Goldtone case. Gilt speckled dial. Moisture resistant. Dura-Crystal® Goldtone stainless steel spiral mesh patterned bracelet with center catch.	\$125.00
92E70	A-25	Goldtone case and bezel ring. Gilt dial. Water resistant to 3 ATM. Dura-Crystal® Goldtone stainless steel link bracelet with fold-over buckle.	\$135.00
92E71	A-25	Goldtone case and bezel ring. Gilt dial. Water resistant to 3 ATM. Dura-Crystal® Goldtone stainless steel link bracelet with fold-over buckle.	\$135.00
92E78	B-8	Goldtone stainless steel case and bezel ring. Gilt dial. Water resistant to 3 ATM. Dura-Crystal® Goldtone stainless steel link bracelet with fold-over buckle.	\$150.00
92E79	B-11	Goldtone case and bezel ring. Gilt dial. Water resistant to 3 ATM. Dura-Crystal® Goldtone stainless steel link bracelet with fold-over buckle.	\$165.00
92E80	B-10	Goldtone case. Gilt dial. Water resistant to 3 ATM. Dura-Crystal® Goldtone stainless steel link bracelet with fold-over buckle.	\$175.00
92E81	B-11	Goldtone case and bezel ring. Gilt dial. Water resistant to 3 ATM. Dura-Crystal® Goldtone stainless steel link bracelet with fold-over buckle.	\$165.00
92F01	A-28		Sold Out
92F04	A-6	Signature Group. Diamond dial. Goldtone case. Black patterned dial set with one diamond. Water resistant to 3 ATM. Dura-Crystal® Goldtone stainless steel link bracelet with center catch.	\$475.00
92F06	A-6	Signature Group. Diamond dial. Goldtone case. Gilt textured dial set with one diamond. Water resistant to 3 ATM. Dura-Crystal® Goldtone link bracelet with center catch.	\$450.00
92F12	A-18	Diamond dial. Goldtone case. Black enamel dial set with one diamond. Moisture resistant. Dura-Crystal® Goldtone tubular link bracelet with center catch.	\$165.00
92F13	A-18	Diamond dial. Goldtone case. Gilt dial set with one diamond. Moisture resistant. Dura-Crystal® Goldtone tubular link bracelet with center catch.	\$165.00
92F18	A-15	Diamond dial. Goldtone case. Gilt patterned dial set with one diamond. Moisture resistant. Dura-Crystal® Goldtone link bracelet with center catch.	\$250.00

MODEL CATALOG NO.	PAGE NO.	DESCRIPTION	PRICE
92F19	A-16	Diamond dial. Goldtone case. Black enamel dial set with one diamond. Moisture resistant. Dura-Crystal® Goldtone woven bracelet with center catch.	\$235.00
92F20	A-15	Diamond dial. Goldtone case. Gilt dial set with one diamond. Moisture resistant. Dura-Crystal® Goldtone tapestry mesh bracelet with center catch.	\$250.00
92F21	A-15		Sold Out
92F22	A-34	Diamond dial. Goldtone case. Black dial set with one diamond. Water resistant to 3 ATM. Dura-Crystal® Goldtone link bracelet with center catch.	\$295.00
92F23	A-18	Diamond dial. Goldtone case. Black dial set with one diamond. Moisture resistant. Dura-Crystal® Goldtone fashion bracelet with center catch.	\$160.00
92F24	A-16	Diamond dial. Goldtone case. Gilt dial set with one diamond. Moisture resistant. Dura-Crystal® Goldtone textured bracelet.	\$195.00
92F25	A-31	Diamond dial. Goldtone case. Black dial set with one diamond. Water resistant to 3 ATM. Dura-Crystal® Goldtone link bracelet with jeweler's center catch.	\$395.00
92F30	A-18	Diamond dial. Goldtone case. Black dial set with one diamond. Moisture resistant. Dura-Crystal® Goldtone stainless steel patterned bracelet with center catch.	\$150.00
92F32	A-16	Diamond dial. Goldtone case. Black dial set with one diamond. Moisture resistant. Dura-Crystal® Goldtone stainless steel bark finish bracelet with center catch.	\$225.00
92F33	A-16	Diamond dial. Goldtone case. Black dial set with one diamond. Moisture resistant. Dura-Crystal® Goldtone herringbone bracelet with center catch.	\$225.00
92F34	A-15	Diamond dial. Goldtone case. Gilt dial set with one diamond. Moisture resistant. Dura-Crystal® Goldtone link bracelet with center catch.	\$275.00
92F35	A-17	Diamond dial. Goldtone case. Black dial set with one diamond. Moisture resistant. Dura-Crystal® Goldtone mesh link patterned bracelet with center catch.	\$185.00
92F36	A-31	Diamond dial. Goldtone case. Gilt dial set with one diamond. Water resistant to 3 ATM. Dura-Crystal® Goldtone link bracelet with center catch.	\$395.00
92F37	A-32	Diamond dial. Goldtone case. Black dial set with one diamond. Water resistant to 3 ATM. Dura-Crystal® Goldtone link bracelet with center catch.	\$395.00
92F38	A-32	Diamond dial. Goldtone case. Black dial set with one diamond. Water resistant to 3 ATM. Dura-Crystal® Goldtone link bracelet with center catch.	\$395.00
92F39	A-18	Diamond dial. Goldtone case. Black dial set with one diamond. Moisture resistant. Dura-Crystal® Goldtone stainless steel bark finish bracelet with center catch.	\$150.00
92F40	A-18	Diamond dial. Goldtone case. Gilt speckled dial set with one diamond. Moisture resistant. Dura-Crystal® Goldtone stainless steel patterned bracelet with center catch.	\$150.00
92F41	A-34	Diamond dial. Goldtone stainless steel case with goldtone bezel ring. Gilt dial set with one diamond. Water resistant to 3 ATM. Dura-Crystal® Goldtone stainless steel link bracelet with center catch.	\$235.00

MODEL CATALOG NO.	PAGE NO.	DESCRIPTION	PRICE
92F42	A-35	Diamond dial. Goldtone stainless steel case with goldtone bezel ring. Black dial set with one diamond. Water resistant to 3 ATM. Dura-Crystal® Goldtone stainless steel link bracelet with center catch.	\$235.00
92F49	A-6	Signature Group. Diamond dial. Goldtone case. Gilt dial set with one diamond. Water resistant to 3 ATM. Dura-Crystal® Goldtone stainless steel link bracelet with jeweler's center catch.	\$475.00
92F50	B-5	Diamond dial. Goldtone case. Black dial set with one diamond. Moisture resistant. Dura-Crystal® Goldtone "bead" link bracelet with center catch.	\$175.00
92F51	B-5	Diamond dial. Goldtone case. Gilt dial set with one diamond. Moisture resistant. Dura-Crystal® Goldtone "bead" link bracelet with center catch.	\$175.00
92F52	B-5	Diamond dial. Goldtone case. Gilt dial set with one diamond. Moisture resistant. Dura-Crystal® Goldtone stainless steel spiral mesh bracelet with center catch.	\$160.00
92F53	B-5	Diamond dial. Goldtone case. Black dial set with one diamond. Moisture resistant. Dura-Crystal® Goldtone stainless steel link bracelet with center catch.	\$160.00
92F54	B-5	Diamond dial. Goldtone case. Gilt dial set with one diamond. Moisture resistant. Dura-Crystal® Goldtone spiral mesh bracelet with center catch.	\$150.00
92F55	B-5	Diamond dial. Goldtone case and bezel ring. Gilt dial set with one diamond. Moisture resistant. Dura-Crystal® Goldtone stainless steel spiral mesh bracelet with center catch.	\$140.00
92F56	B-4	Diamond dial. Goldtone case. Gilt dial set with one diamond. Moisture resistant. Dura-Crystal® Goldtone bark finish link bracelet with center catch.	\$185.00
92F57	B-4	Diamond dial. Goldtone case. Black dial set with one diamond. Moisture resistant. Dura-Crystal® Goldtone textured link bracelet with center catch.	\$185.00
92F58	B-5	Diamond dial. Goldtone case. Gilt dial set with one diamond. Moisture resistant. Dura-Crystal® Goldtone fashion link bracelet with center catch.	\$195.00
92F59	B-5	Diamond dial. Goldtone case. Black dial set with one diamond. Moisture resistant. Dura-Crystal® Goldtone fashion link bracelet with center catch.	\$195.00
92F61	B-3	Diamond dial. Goldtone case. Black dial set with one diamond. Moisture resistant. Dura-Crystal® Goldtone fashion link bracelet with center catch.	\$295.00
92F62	B-10	Diamond dial. Goldtone case and bezel ring. Black dial set with one diamond. Water resistant to 3 ATM. Dura-Crystal® Goldtone stainless steel link bracelet with fold-over buckle.	\$195.00
92F63	B-10	Diamond dial. Goldtone case. Black dial set with one diamond. Water resistant to 3 ATM. Dura-Crystal® Goldtone elegantly fashioned link bracelet with center catch.	\$275.00
92F64	B-9	Diamond dial. Goldtone case. Black dial set with one diamond. Water resistant to 3 ATM. Dura-Crystal® Goldtone fashion link bracelet with center catch.	\$395.00
92F65	B-9	Diamond dial. Goldtone case. Black dial set with one diamond. Water resistant to 3 ATM. Dura-Crystal® Goldtone patterned link bracelet with center catch.	\$395.00

MODEL CATALOG NO.	PAGE NO.	DESCRIPTION	PRICE
92F66	B-3	Diamond dial. Goldtone case. Black dial set with one diamond. Water resistant to 3 ATM. Dura-Crystal® Goldtone sculptured fashion link bracelet with center catch.	\$425.00
92F67	B-3	Diamond dial. Goldtone case. Gilt dial set with one diamond. Moisture resistant. Dura-Crystal® Goldtone sculptured fashion link bracelet with center catch.	\$295.00
92G13	A-38		Sold out
92G14	A-47	Calendar. Goldtone case and bezel ring. Black patterned dial. Water resistant to 3 ATM. Dura-Crystal® Black leather strap.	\$135.00
92G15	A-44	Calendar. Goldtone stainless steel case and bezel ring. White dial. Water resistant to 3 ATM. Dura-Crystal® Goldtone stainless steel link bracelet with center catch.	\$215.00
92G16	A-44	Calendar. Goldtone stainless steel case with goldtone bezel ring. White dial. Water resistant to 3 ATM. Dura-Crystal® Goldtone stainless steel link bracelet with center catch.	\$215.00
92G17	B-8	Day/date. 24-Hour dial. Goldtone stainless steel case and bezel ring. Screw back. White dial features a red 24-Hour readout. Water resistant to 3 ATM. Dura-Crystal® Goldtone stainless steel link bracelet with fold-over buckle.	\$135.00
92H04	A-42	Goldtone case. Two-tone gilt dial. Moisture resistant. Dura-Crystal® Goldtone matte bracelet with raised and polished vertical links.	\$225.00
92H05	A-19		Sold Out
92H07	A-29	Goldtone case. Gilt dial. Moisture resistant. Dura-Crystal® Black leather strap.	\$125.00
92H09	A-5	Signature Group. Goldtone case. Gilt dial. Water resistant to 3 ATM. Dura-Crystal® Goldtone link bracelet with center catch.	\$450.00
92H11	A-5	Signature Group. Goldtone case. Gilt dial. Water resistant to 3 ATM. Dura-Crystal® Goldtone link bracelet with center catch.	\$425.00
92H12	A-42	Goldtone case. Champagne textured dial. Moisture resistant. Dura-Crystal® Stainless steel link bracelet in matte and polished goldtone with center catch.	\$215.00
92H14	A-47		Sold out
92H15	A-25	Goldtone case. Gilt patterned dial. Moisture resistant. Dura-Crystal® Goldtone fashion bracelet with center catch.	\$135.00
92H16	A-22	Goldtone case. Gilt dial. Moisture resistant. Dura-Crystal® Goldtone patterned bracelet with center catch.	\$175.00
92H17	A-23	Goldtone case. Gilt patterned dial. Moisture resistant. Dura-Crystal® Goldtone mesh patterned bracelet with center catch.	\$165.00
92H18	A-23	Goldtone case. Gilt linen patterned dial. Moisture resistant. Dura-Crystal® Goldtone woven mesh bracelet with cross bar decor and center catch.	\$165.00
92H19	A-21	Goldtone stainless steel case. Gilt patterned dial. Moisture resistant. Dura-Crystal® Goldtone stainless steel criss-cross mesh bracelet with center catch.	\$195.00
92H21	A-39	Classic® Goldtone case. White enamel dial. Water resistant to 3 ATM. Dura-Crystal® Goldtone stainless steel link bracelet with center catch.	\$250.00
92H22	A-39	Classic® Goldtone case White enamel dial. Water resistant to 3 ATM. Dura-Crystal® Goldtone stainless steel link bracelet with center catch.	\$250.00
92H23	A-21	Goldtone case. Gilt dial. Moisture resistant. Dura-Crystal® Goldtone woven bracelet with center catch.	\$215.00

MODEL CATALOG NO.	PAGE NO.	DESCRIPTION	PRICE
92H24	A-21	Goldtone case. Gilt dial. Moisture resistant. Dura-Crystal® Goldtone tapestry mesh bracelet with center catch.	\$225.00
92H25	A-20	Goldtone case. Gilt dial. Moisture resistant. Dura-Crystal® Goldtone woven bracelet with center catch.	\$250.00
92H26	A-38	Goldtone case. Gilt dial. Water resistant to 3 ATM. Dura-Crystal® Goldtone link bracelet with center catch.	\$275.00
92H27	A-36	Goldtone case. Gilt linen patterned dial. Water resistant to 3 ATM. Dura-Crystal® Goldtone link bracelet with jeweler's center catch.	\$375.00
92H32	A-40	Gemini® Goldtone stainless steel case and bezel ring. Gilt dial. Water resistant to 3 ATM. Dura-Crystal® Goldtone stainless steel bracelet with center catch.	\$235.00
92H33	A-41	Goldtone stainless steel case and bezel ring. Gilt dial. Water resistant to 3 ATM. Dura-Crystal® Goldtone stainless steel link bracelet with center catch.	\$235.00
92H35	A-40	Gemini® Goldtone stainless steel case and bezel ring. Gilt dial. Water resistant to 3 ATM. Dura-Crystal® Goldtone stainless steel link bracelet with center catch.	\$235.00
92H36	A-48	Goldtone case and bezel ring. White dial. Water resistant to 3 ATM. Dura-Crystal® Black leather strap.	\$125.00
92H37	A-48	Goldtone case. White dial. Moisture resistant. Brown leather strap.	\$115.00
92H38	A-26	Goldtone case. Gilt dial. Moisture resistant. Dura-Crystal® Goldtone tubular link bracelet with center catch.	\$135.00
92H39	A-26	Goldtone case. Gilt dial. Moisture resistant. Dura-Crystal® Goldtone tubular link bracelet with center catch.	\$135.00
92H40	A-22	Goldtone case. Gilt dial. Moisture resistant. Dura-Crystal® Goldtone stainless steel spiral mesh bracelet with center catch.	\$175.00
92H41	A-26	Goldtone case. Gilt dial. Moisture resistant. Dura-Crystal® Goldtone stainless steel spiral mesh bracelet with center catch.	\$125.00
92H43	A-22	Goldtone case. Gilt linen textured dial. Moisture resistant. Dura-Crystal® Goldtone mesh patterned bracelet with center catch.	\$195.00
92H44	A-22	Goldtone case. Gilt linen textured dial. Moisture resistant. Dura-Crystal® Goldtone herringbone patterned bracelet with center catch.	\$195.00
92H45	A-21	Goldtone case. Gilt dial. Moisture resistant. Dura-Crystal® Goldtone link bracelet with center catch.	\$250.00
92H46	A-23	Goldtone case. Gilt dial. Moisture resistant. Dura-Crystal® Goldtone patterned mesh bracelet with center catch.	\$165.00
92H47	A-21	Goldtone case. Gilt dial. Moisture resistant. Dura-Crystal® Goldtone fashion link bracelet with center catch.	\$235.00
92H48	A-36	Goldtone case. Gilt dial. Water resistant to 3 ATM. Dura-Crystal® Goldtone link bracelet with center catch.	\$375.00
92H49	A-36	Goldtone case. Ivory dial. Water resistant to 3 ATM. Dura-Crystal® Goldtone link bracelet with center catch.	\$375.00
92H50	A-37	Goldtone case. Gilt dial. Water resistant to 3 ATM. Dura-Crystal® Goldtone link bracelet with center catch.	\$375.00
92H51	B-7	Goldtone case. Gilt dial. Moisture resistant. Dura-Crystal® Goldtone "bead and tube" link bracelet with center catch.	\$150.00
92H52	B-7	Goldtone case. Gilt dial. Moisture resistant. Dura-Crystal® Goldtone "bead and tube" link bracelet with center catch.	\$150.00

MODEL CATALOG NO.	PAGE NO.	DESCRIPTION	PRICE
92H55	B-8	Goldtone case and bezel ring. Gilt dial. Moisture resistant. Dura-Crystal® Goldtone stainless steel spiral mesh bracelet with center catch.	\$115.00
92H56	B-8	Goldtone case. Gilt dial. Moisture resistant. Dura-Crystal® Goldtone stainless steel spiral mesh textured bracelet with center catch.	\$135.00
92H57	B-8	Goldtone case. Gilt dial. Moisture resistant. Dura-Crystal® Goldtone stainless steel mesh textured bracelet with center catch.	\$135.00
92H58	B-7	Goldtone case. Gilt dial. Moisture resistant. Dura-Crystal® Goldtone patterned spiral mesh bracelet with center catch.	\$185.00
92H59	B-7	Goldtone case. Gilt dial. Moisture resistant. Dura-Crystal® Goldtone stainless steel patterned spiral mesh bracelet with center catch.	\$185.00
92H60	B-7	Goldtone case. Gilt dial. Moisture resistant. Dura-Crystal® Goldtone woven mesh bracelet with center catch.	\$195.00
92H61	B-6	Goldtone case. Gilt dial. Moisture resistant. Dura-Crystal® Goldtone sculptured fashion link bracelet with center catch.	\$275.00
92H62	B-6	Goldtone case. Gilt dial. Moisture resistant. Dura-Crystal® Goldtone stainless steel fashion link bracelet with center catch.	\$295.00
92H63	B-6	Goldtone case. Gilt dial. Water resistant to 3 ATM. Dura-Crystal® Goldtone sculptured fashion link bracelet with center catch.	\$395.00
92H64	B-6	Goldtone case. Black dial. Moisture resistant. Dura-Crystal® Goldtone "slimline" link bracelet with center catch.	\$265.00
92H65	B-6	Goldtone case. Gilt dial. Moisture resistant. Dura-Crystal® Goldtone circular link fashion bracelet with center catch.	\$250.00
92H67	B-10	Goldtone case. Gilt dial. Water resistant to 3 ATM. Dura-Crystal® Goldtone fashion link bracelet with center catch.	\$375.00
92J04	A-24	Goldtone case and matching link bracelet with center catch. Moisture resistant. Dura-Crystal®	\$150.00
92J06	A-23	Goldtone case with braided bezel design. Gilt patterned dial. Goldtone mesh bracelet with center catch.	\$175.00
92J12	A-14	Diamond dial. Goldtone case. Brown textured dial set with diamonds at 6 and 12 o'clock positions. Moisture resistant. Dura-Crystal® Goldtone patterned link bracelet with center catch.	\$295.00
92J13	A-14	Diamond dial. Goldtone case. Black dial set with two diamonds. Moisture resistant. Dura-Crystal® Goldtone mesh bracelet with center catch.	\$295.00
92J30	A-13	Diamond Caresse® Moisture resistant. Goldtone case set with two diamonds on beaded bezel. Gilt satin sunray dial. Goldtone stainless steel mesh bracelet with center catch.	\$195.00
92J34	A-10	Diamond overlay. Goldtone case set with two diamonds. Gilt stone-finish dial. Moisture resistant. Dura-Crystal® Goldtone textured mesh bracelet with center catch.	\$335.00
92J36	A-9	Diamond overlay. Goldtone case set with four diamonds. Black glossy dial. Moisture resistant. Dura-Crystal® Goldtone woven mesh bracelet with center catch.	\$365.00
92J37	A-9	Diamond overlay. Goldtone case set with six diamonds. Gilt patterned dial. Moisture resistant. Dura-Crystal® Goldtone woven mesh bracelet with center catch.	\$395.00
92J45	A-24		Sold out
92J50	A-23		Sold out

MODEL CATALOG NO.	PAGE NO.	DESCRIPTION	PRICE
92J51	A-31	Diamond dial. Goldtone case and bracelet with alternating brushed and polished links. Glossy black dial set with 12 diamonds. Moisture resistant. Dura-Crystal® Center catch.	\$425.00
92J57	A-17		Sold out
92J71	A-23	Goldtone case. Gilt florentine dial. Moisture resistant. Dura-Crystal® Goldtone stainless steel mesh bracelet with center catch.	\$175.00
92J73	A-30		Sold out
92J75	A-37	Goldtone case. Two-tone brushed and matte champagne sunray dial. Water resistant to 3 ATM. Dura-Crystal® Goldtone solid link patterned bracelet with center catch.	\$315.00
92J76	A-33	Diamond dial. Goldtone case. Black patterned dial set with one diamond. Water resistant to 3 ATM. Dura-Crystal® Goldtone link bracelet with center catch.	\$335.00
92J79	A-18	Diamond dial. Goldtone case. Black matte dial set with one diamond. Moisture resistant. Dura-Crystal® Goldtone stainless steel mesh bracelet with center catch.	\$160.00
92J80	A-17		Sold out
92J81	A-17	Diamond dial. Goldtone case. Black dial set with one diamond. Moisture resistant. Dura-Crystal® Goldtone stainless steel mesh bracelet with center catch.	\$175.00
92J82	A-16		Sold out
92J85	A-35	Diamond dial. Goldtone case. Black dial set with one diamond. Moisture resistant. Dura-Crystal® Goldtone patterned mesh bracelet with center catch.	\$215.00
92J86	A-21	Goldtone case. Two-tone gilt dial. Water resistant to 3 ATM. Dura-Crystal® Goldtone stainless steel link bracelet with center catch.	\$235.00
92J87	A-34		Sold out
92J91	A-26	Goldtone case. Gilt textured dial. Moisture resistant. Dura-Crystal® Goldtone stainless steel textured bracelet with center catch.	\$115.00
92J92	A-24	Goldtone case. Gilt foxtail patterned dial. Moisture resistant. Dura-Crystal® Goldtone tapered mesh bracelet with center catch.	\$145.00
92J93	A-28	Goldtone case. Light champagne dial. Moisture resistant. Dura-Crystal® Black leather strap.	\$160.00
92J94	A-28	Goldtone case. Gilt dial. Moisture resistant. Dura-Crystal® Burgundy leather strap.	\$160.00
92J95	A-28	Diamond dial. Goldtone case. Black dial set with one diamond. Moisture resistant. Dura-Crystal® Black leather strap.	\$185.00
92J96	A-28	Diamond dial. Goldtone case. Black dial set with one diamond. Water resistant to 3 ATM. Dura-Crystal® Black leather strap.	\$135.00
92J99	A-32	Diamond dial. Goldtone case. Black dial set with one diamond. Water resistant to 3 ATM. Dura-Crystal® Goldtone link bracelet with center catch.	\$395.00
92K22	A-29	Goldtone case. Pale gilt dial. Dura-Crystal® Burgundy leather strap.	\$115.00
92K38	A-33	Diamond dial. Goldtone case and link bracelet with center catch. Black glossy and gilt textured dial set with one diamond. Moisture resistant. Dura-Crystal®	\$350.00
92K44	A-37	Goldtone case and link bracelet. Gilt dial. Moisture resistant. Dura-Crystal® Center catch.	\$325.00
92K68	A-13	Diamond Caresse® Goldtone case set with four diamonds on bezel. Gilt brushed dial. Moisture resistant. Goldtone stainless steel mesh bracelet with center catch.	\$215.00
92K69	A-12		Sold out
92K71	A-11		Sold out

MODEL CATALOG NO.	PAGE NO.	DESCRIPTION	PRICE
92K74	A-17	Diamond dial. Goldtone case with stitched link pattern bracelet. Black matte dial set with one diamond. Moisture resistant. Center catch.	\$175.00
92K75	A-17	Diamond dial. Goldtone case. Gilt textured dial set with one diamond. Goldtone link bracelet with center catch.	\$175.00
92K91	A-29		Sold out
92L73	A-13	Diamond Caresse® Goldtone case set with two diamonds on bezel. Silver satin dial. Moisture resistant. Goldtone mesh patterned bracelet with center catch.	\$195.00
92L77	A-12	Diamond Caresse® Goldtone case set with six diamonds on bezel. Silver crystalline dial. Moisture resistant. Goldtone stainless steel mesh textured bracelet with center catch.	\$250.00
92L78	A-12	Diamond Caresse® Goldtone case set with eight diamonds on bezel. Gilt linen dial. Moisture resistant. Goldtone stainless steel mesh textured bracelet with center catch.	\$275.00
92M38	A-37	Goldtone case and link bracelet. Gilt dial. Moisture resistant. Dura-Crystal® Center catch.	\$375.00
92M51	A-33	Diamond dial. Goldtone case and link bracelet with center catch. Black glossy and gilt textured dial set with one diamond. Moisture resistant. Dura-Crystal®	\$395.00
92M64	A-53		Sold out
92M73	A-30		Sold out
92M75	A-37	Goldtone case. Two-tone brushed and matte champagne sunray dial. Water resistant to 3 ATM. Dura-Crystal® Goldtone solid link patterned bracelet with center catch.	\$335.00
92M76	A-33	Diamond dial. Goldtone case. Black patterned dial set with one diamond. Water resistant to 3 ATM. Dura-Crystal® Goldtone link bracelet with center catch.	\$365.00
92M79	A-55	Goldtone case. Gilt dial. Moisture resistant. Dura-Crystal® Goldtone basket weave link bracelet with center catch.	\$375.00
92M89	A-50	Diamond set dial. Goldtone case. Black dial with 24 diamonds set beneath Dura-Crystal® Water resistant to 3 ATM. Goldtone textured bracelet with center catch.	\$595.00
92M90	A-50	Diamond set dial. Goldtone bark-textured case and link bracelet. Black dial with 24 diamonds set beneath Dura-Crystal® Water resistant to 3 ATM. Center catch.	\$650.00
92M96	A-56	Goldtone case. Gilt dial. Water resistant to 3 ATM. Dura-Crystal® Goldtone bracelet with center catch.	\$315.00
92M98	A-57	Goldtone case. Two-tone gilt sunray and matte dial. Moisture resistant. Dura-Crystal® Goldtone stainless steel mesh bracelet with center catch.	\$175.00
92M99	A-56	Goldtone case. Gilt waffle pattern dial. Moisture resistant. Dura-Crystal® Goldtone textured link bracelet with center catch.	\$295.00
92N32	A-52	Diamond dial. Goldtone case. Black dial set with one diamond. Water resistant to 3 ATM. Dura-Crystal® Goldtone link bracelet with center catch.	\$295.00
92N33	A-52	Diamond dial. Goldtone case. Gilt dial set with diamonds at 6 and 12 o'clock positions. Moisture resistant. Dura-Crystal® Goldtone bracelet with alternating brushed and polished links and center catch.	\$325.00
92N35	A-53	Diamond dial. Goldtone case. Gilt dial set with one diamond. Moisture resistant. Dura-Crystal® Goldtone woven mesh bracelet with center catch.	\$225.00

MODEL CATALOG NO.	PAGE NO.	DESCRIPTION	PRICE
92N36	A-54	Diamond dial. Goldtone case. Black dial set with one diamond. Moisture resistant. Dura-Crystal® Goldtone woven mesh bracelet with center catch and safety hook.	\$195.00
92N37	A-53	Diamond dial. Goldtone case. Black dial set with four diamonds. Moisture resistant. Dura-Crystal® Goldtone woven mesh bracelet with center catch.	\$265.00
92N38	A-52	Diamond dial. Goldtone case. Champagne dial set with one diamond. Water resistant to 3 ATM. Dura-Crystal® Tapered goldtone link bracelet with center catch.	\$340.00
92N39	A-51	Diamond dial. Goldtone case. Black dial set with four diamonds. Water resistant to 3 ATM. Dura-Crystal® Goldtone link bracelet with center catch.	\$425.00
92N40	A-51	Diamond dial. Goldtone case. Black dial set with one diamond. Water resistant to 3 ATM. Dura-Crystal® Brushed goldtone link bracelet with bright accents and center catch.	\$340.00
92N41	A-33	Diamond dial. Goldtone case. Black dial set with one diamond. Moisture resistant. Dura-Crystal® Goldtone link bracelet with center catch.	\$395.00
92N43	A-35	Diamond dial. Goldtone case. Black dial set with one diamond. Moisture resistant. Dura-Crystal® Goldtone patterned mesh bracelet with center catch.	\$250.00
92N44	A-52	Diamond dial. Goldtone case with textured top. Black dial set with one diamond. Water resistant to 3 ATM. Dura-Crystal® Goldtone bark-textured link bracelet with center catch.	\$340.00
92N45	A-51	Diamond dial. Goldtone case. Black dial set with four diamonds. Water resistant to 3 ATM. Dura-Crystal® Goldtone woven mesh bracelet with center catch.	\$375.00
92N47	A-34	Diamond dial. Goldtone case. Black dial set with one diamond. Water resistant to 3 ATM. Dura-Crystal® Goldtone stainless steel link bracelet with center catch.	\$295.00
92N48	A-69	Diamond dial. Goldtone case. Black glossy dial set with one diamond. Moisture resistant. Dura-Crystal® Black leather strap.	\$150.00
92N49	A-69	Diamond dial. Goldtone case. Black glossy dial set with one diamond. Water resistant to 3 ATM. Dura-Crystal® Black leather strap.	\$135.00
92N51	A-31	Diamond dial. Goldtone case and bracelet with alternating brushed and polished links. Glossy black dial set with 12 diamonds. Water resistant to 3 ATM. Dura-Crystal® Center catch.	\$450.00
92N52	A-69	Diamond dial. Goldtone case. Black dial set with one diamond. Moisture resistant. Dura-Crystal® Black leather strap.	\$160.00
92N53	A-32		Sold out
92N54	A-51	Diamond dial. Goldtone case. Gilt dial set with diamonds at quarter hour positions. Water resistant to 3 ATM. Dura-Crystal® Goldtone patterned link bracelet with center catch.	\$495.00
92N55	A-50	Diamond dial. Goldtone case. Black enamel dial set with 12 diamonds. Water resistant to 3 ATM. Dura-Crystal® Goldtone patterned link bracelet with center catch.	\$725.00
92N56	A-69	Diamond dial. Goldtone case. Black textured dial set with one diamond. Water resistant to 3 ATM. Dura-Crystal® Black leather strap.	\$195.00
92N59	A-69		Sold out
92N63	A-6	Signature Group. Diamond dial. Goldtone case. Black patterned dial set with one diamond. Water resistant to 3 ATM. Dura-Crystal® Goldtone stainless steel link bracelet with center catch.	\$495.00

MODEL CATALOG NO.	PAGE NO.	DESCRIPTION	PRICE
92N64	A-7	Signature Group. Diamond dial. Goldtone case. Black dial set with four diamonds. Water resistant to 3 ATM. Dura-Crystal® Goldtone stainless steel link bracelet with center catch.	\$575.00
92N65	A-5		Sold out
92N66	A-6	Signature Group. Diamond dial. Goldtone case. Gilt textured dial set with one diamond. Water resistant to 3 ATM. Dura-Crystal® Goldtone link bracelet with center catch.	\$475.00
92N67	A-30	Diamond overlay. Goldtone case set with 20 diamonds. Black matte dial. Moisture resistant. Dura-Crystal® Intricately patterned goldtone link bracelet with center catch.	\$595.00
92N68	A-54	Diamond dial. Goldtone case. Gilt dial set with one diamond. Moisture resistant. Dura-Crystal® Goldtone stainless steel mesh bracelet with center catch.	\$185.00
92N69	A-52	Diamond dial. Goldtone case. Black dial set with four diamonds. Moisture resistant. Dura-Crystal® Goldtone stainless steel mesh bracelet with center catch.	\$265.00
92N70	A-54	Diamond dial. Goldtone case. Black dial with white speckling and one diamond at 12 o'clock. Moisture resistant. Dura-Crystal® Goldtone stainless steel mesh bracelet with center catch.	\$185.00
92N71	A-53	Diamond dial. Goldtone case. Gilt patterned dial set with two diamonds. Moisture resistant. Dura-Crystal® Goldtone stainless steel mesh bracelet with center catch.	\$240.00
92N72	A-35	Diamond dial. Goldtone case. Black checkerboard patterned dial set with one diamond. Moisture resistant. Dura-Crystal® Goldtone stainless steel mesh bracelet with center catch.	\$215.00
92N78	A-34	Diamond dial. Goldtone case. Black dial set with one diamond. Water resistant to 3 ATM. Dura-Crystal® Goldtone link bracelet with center catch.	\$325.00
92N79	A-52	Diamond dial. Goldtone case. Gilt dial set with one diamond. Moisture resistant. Dura-Crystal® Goldtone link bracelet with center catch.	\$315.00
92N80	A-51		Sold Out
92N81	A-31	Diamond dial. Goldtone case. Black dial set with one diamond. Water resistant to 3 ATM. Dura-Crystal® Goldtone link bracelet with jeweler's catch.	\$425.00
92N84	A-32	Diamond dial. Goldtone case. Black dial set with one diamond. Water resistant to 3 ATM. Dura-Crystal® Goldtone link bracelet with center catch.	\$425.00
92N85	A-31	Diamond dial. Goldtone case. Gilt dial set with one diamond. Water resistant to 3 ATM. Dura-Crystal® Goldtone link bracelet with center catch.	\$425.00
92N86	A-54	Diamond dial. Goldtone case. Gilt dial set with one diamond. Moisture resistant. Dura-Crystal® Goldtone stainless steel patterned bracelet with jeweler's center catch.	\$165.00
92N87	A-54	Diamond dial. Goldtone case. Black speckled dial set with one diamond. Moisture resistant. Dura-Crystal® Goldtone stainless steel bracelet with jeweler's center catch.	\$165.00
92N88	A-35	Diamond dial. Goldtone stainless steel case with goldtone bezel ring. Black dial set with one diamond. Water resistant to 3 ATM. Dura-Crystal® Goldtone stainless steel link bracelet with center catch.	\$250.00
92N89	A-32	Diamond dial. Goldtone case. Black dial set with one diamond. Water resistant to 3 ATM. Dura-Crystal® Goldtone link bracelet with center catch.	\$425.00

MODEL CATALOG NO.	PAGE NO.	DESCRIPTION	PRICE
92N90	A-34	Diamond dial. Goldtone stainless steel case with goldtone bezel ring. Gilt dial set with one diamond. Water resistant to 3 ATM. Dura-Crystal® Goldtone stainless steel link bracelet with center catch.	\$250.00
92N97	A-6	Signature Group. Diamond dial. Goldtone case. Gilt dial set with one diamond. Water resistant to 3 ATM. Dura-Crystal® Goldtone stainless steel link bracelet with jeweler's center catch.	\$495.00
92N98	A-7	Signature Group. Diamond dial. Goldtone case. Gilt dial set with four diamonds. Water resistant to 3 ATM. Dura-Crystal® Goldtone stainless steel link bracelet with jeweler's center catch.	\$575.00
92N99	B-10	Diamond dial. Calendar. Goldtone stainless steel case and bezel ring. Black dial set with one diamond. Water resistant to 3 ATM. Dura-Crystal® Goldtone stainless steel link bracelet with fold-over buckle.	\$215.00
92P08	A-55		Sold Out
92P09	A-55	Goldtone case. Two-tone gilt dial. Moisture resistant. Dura-Crystal® Goldtone link bracelet with center catch.	\$375.00
92P10	A-55	Goldtone bark finish case and bracelet. Gilt dial. Water resistant to 3 ATM. Dura-Crystal® Center catch.	\$315.00
92P13	A-57	Goldtone case. Gilt dial. Moisture resistant. Dura-Crystal® Goldtone mesh bracelet with center catch.	\$175.00
92P16	A-56		Sold out
92P17	A-42	Goldtone case. Two-tone gilt dial. Moisture resistant. Dura-Crystal® Goldtone matte bracelet with raised and polished vertical links.	\$250.00
92P21	A-5	Signature Group. Goldtone case. Gilt dial. Water resistant to 3 ATM. Dura-Crystal® Goldtone stainless steel link bracelet with center catch.	\$475.00
92P22	A-5	Signature Group. Goldtone case. Gilt patterned dial. Water resistant to 3 ATM. Dura-Crystal® Goldtone link bracelet with center catch.	\$450.00
92P23	A-5	Signature Group. Goldtone case. Gilt patterned dial. Water resistant to 3 ATM. Dura-Crystal® Goldtone link bracelet with center catch.	\$450.00
92P24	A-57	Goldtone case. Gilt textured dial. Moisture resistant. Dura-Crystal® Goldtone stainless steel mesh bracelet with center catch.	\$160.00
92P25	A-57	Goldtone case. Gilt dial. Moisture resistant. Dura-Crystal® Goldtone stainless steel mesh bracelet with center catch.	\$160.00
92P26	A-57	Goldtone case. Silver textured dial. Moisture resistant. Dura-Crystal® Goldtone stainless steel mesh bracelet with center catch.	\$185.00
92P28	A-47	Goldtone case. Gilt textured dial. Moisture resistant. Dura-Crystal® Black textured leather strap.	\$140.00
92P30	A-39	Classic® Goldtone case. White enamel dial. Water resistant to 3 ATM. Dura-Crystal® Goldtone stainless steel link bracelet with center catch.	\$265.00
92P31	A-39	Classic® Goldtone case. White enamel dial. Water resistant to 3 ATM. Dura-Crystal® Goldtone stainless steel link bracelet with center catch.	\$265.00
92P32	A-36	Goldtone case. Gilt linen patterned dial. Water resistant to 3 ATM. Dura-Crystal® Goldtone link bracelet with jeweler's center catch.	\$395.00
92P33	A-56	Goldtone case. Gilt dial. Moisture resistant. Dura-Crystal® Goldtone link bracelet with center catch.	\$285.00
92P34	A-55	Goldtone case. Gilt dial. Moisture resistant. Dura-Crystal® Goldtone fashion link bracelet with center catch.	\$375.00

MODEL NO.	CATALOG PAGE NO.	DESCRIPTION	PRICE
92P35	A-48	Goldtone case. White dial. Moisture resistant. Brown leather strap.	\$125.00
92P37	A-36	Goldtone case. Ivory dial. Water resistant to 3 ATM. Dura-Crystal® Goldtone link bracelet with center catch.	\$395.00
92P38	A-36	Goldtone case. Gilt dial. Water resistant to 3 ATM. Dura-Crystal® Goldtone link bracelet with center catch.	\$395.00
92P39	A-37	Goldtone case. Gilt dial. Water resistant to 3 ATM. Dura-Crystal® Goldtone link bracelet with center catch.	\$395.00
92P40	B-10	Goldtone case. Gilt dial. Water resistant to 3 ATM. Dura-Crystal® Goldtone fashion link bracelet with center catch.	\$395.00
92R00	B-12	Diamond dial. Goldtone case. Black dial set with one diamond. Water resistant to 3 ATM. Dura-Crystal® Goldtone stainless steel fashion link bracelet with center catch.	\$225.00
92R05	B-12	Diamond dial. Goldtone case. Black dial set with one diamond. Moisture resistant. Dura-Crystal® Goldtone stainless steel spiral mesh bracelet with center catch.	\$185.00
92R06	B-12	Diamond dial. Goldtone case. Gilt dial set with one diamond. Moisture resistant. Dura-Crystal® trimmed with black decor. Goldtone spiral mesh bracelet with center catch.	\$195.00
92R07	B-12	Diamond dial. Goldtone stainless steel case. Goldtone bezel ring. Black dial set with one diamond. Water resistant to 3 ATM. Dura-Crystal® Goldtone stainless steel fashion link bracelet with center catch.	\$325.00
92R09	B-10	Diamond dial. Goldtone case. Black dial set with one diamond. Water resistant to 3 ATM. Dura-Crystal® Goldtone fashion link bracelet with center catch.	\$295.00
92R10	B-9	Diamond dial. Goldtone case. Black dial set with one diamond. Water resistant to 3 ATM. Dura-Crystal® Goldtone fashion link bracelet with center catch.	\$425.00
92R11	B-9	Diamond dial. Goldtone case. Black dial set with one diamond. Water resistant to 3 ATM. Dura-Crystal® Goldtone patterned link bracelet with center catch.	\$425.00
92R12	B-12	Diamond dial. Goldtone case and bezel ring. Black dial set with six diamonds. Water resistant to 3 ATM. Dura-Crystal® Goldtone stainless steel fashion link bracelet with center catch.	\$450.00
92S00	A-38	Calendar. Goldtone case. Gilt dial. Water resistant to 3 ATM. Dura-Crystal® Goldtone link bracelet with center catch.	\$295.00
92S01	A-60	Calendar. Goldtone case and bezel ring. Gilt patterned dial. Water resistant to 3 ATM. Dura-Crystal® Goldtone stainless steel link bracelet with fold-over buckle.	\$165.00
92S02	A-61	Calendar. Goldtone stainless steel case and bezel ring. Gilt dial with grey minute track on crystal. Water resistant to 3 ATM. Dura-Crystal® Goldtone stainless steel bracelet with fold-over buckle.	\$150.00
92S03	A-58	Calendar. Goldtone stainless steel case and bezel ring. Gilt dial. Water resistant to 3 ATM. Dura-Crystal® Goldtone stainless steel link bracelet with fold-over buckle.	\$235.00
92S04	A-60	Calendar. Goldtone case and bezel ring. Gilt patterned dial. Water resistant to 3 ATM. Dura-Crystal® Goldtone stainless steel link bracelet with center catch.	\$175.00
92S05	A-60	Calendar. Goldtone stainless steel case and bezel ring. Gilt speckled dial. Water resistant to 5 ATM. Dura-Crystal® Goldtone stainless steel link bracelet with fold-over buckle.	\$165.00

MODEL NO.	CATALOG PAGE NO.	DESCRIPTION	PRICE
92S06	A-68	Shriner's watch. Calendar. Goldtone case. Gilt Shriner's dial. Water resistant to 3 ATM. Dura-Crystal® Goldtone stainless steel link bracelet with hook-lock clasp.	\$185.00
92S07	A-68	Shriner's watch. Calendar. Goldtone case. Black Shriner's dial. Water resistant to 3 ATM. Dura-Crystal® Goldtone stainless steel link bracelet with hook-lock clasp.	\$185.00
92S08	A-71	Calendar. Goldtone case and bezel ring. White dial. Moisture resistant. Dura-Crystal® Black leather strap.	\$125.00
92S09	A-47	Calendar. Goldtone case and bezel ring. Black patterned dial. Water resistant to 3 ATM. Dura-Crystal® Black leather strap.	\$150.00
92S10	A-48	Calendar. Goldtone case and bezel ring. White dial. Water resistant to 3 ATM. Dura-Crystal® Black leather strap.	\$135.00
92S12	A-45	Calendar. Goldtone case and bezel ring. Gilt dial. Water resistant to 3 ATM. Dura-Crystal® Goldtone stainless steel expansion bracelet.	\$150.00
92S13	A-43	Calendar. Goldtone stainless steel case and bezel ring. Gilt dial. Water resistant to 3 ATM. Dura-Crystal® Goldtone stainless steel link bracelet with center catch.	\$235.00
92S14	A-58	Calendar. Goldtone stainless steel case and bezel ring. Ivory dial. Water resistant to 3 ATM. Dura-Crystal® Goldtone stainless steel link bracelet with center catch.	\$225.00
92S15	A-44	Calendar. Goldtone stainless steel case and bezel ring. White dial. Water resistant to 3 ATM. Dura-Crystal® Goldtone stainless steel link bracelet with center catch.	\$225.00
92S16	A-44	Calendar. Goldtone stainless steel case and bezel ring. White dial. Water resistant to 3 ATM. Dura-Crystal® Goldtone stainless steel link bracelet with center catch.	\$225.00
92S19	B-11	Calendar. Goldtone case and bezel ring. Gilt dial. Water resistant to 3 ATM. Dura-Crystal® Goldtone stainless steel link bracelet with fold-over buckle.	\$175.00
92S20	B-10	Calendar. Goldtone case. Gilt dial. Water resistant to 3 ATM. Dura-Crystal® Goldtone stainless steel link bracelet with fold-over buckle.	\$185.00
92S21	B-11	Calendar. Goldtone case and bezel ring. Gilt dial. Water resistant to 3 ATM. Dura-Crystal® Goldtone stainless steel link bracelet with fold-over buckle.	\$175.00
92S22	B-13	Calendar. Goldtone case. White dial. Water resistant to 3 ATM. Dura-Crystal® Goldtone stainless steel fashion link bracelet with center catch.	\$195.00
92S23	B-13	Calendar. Goldtone case. Gilt dial. Moisture resistant. Dura-Crystal® Goldtone stainless steel spiral mesh bracelet with center catch.	\$175.00
92S24	B-14	Calendar. 24-Hour dial. Goldtone case. White dial with inner ring features 24-hour time. Water resistant to 3 ATM. Butterscotch leather strap.	\$125.00
92T32	A-16	Diamond dial. Goldtone case. Black enamel dial set with one diamond. Moisture resistant. Goldtone link bracelet with center catch.	\$215.00
92T36	A-24		Sold out
92T38	A-20	Goldtone case. Black glossy dial. Moisture resistant. Dura-Crystal® Goldtone woven mesh bracelet with center catch.	\$275.00
92T43	A-15	Diamond dial. Black matte textured dial set with one diamond. Moisture resistant. Dura-Crystal® Goldtone woven mesh bracelet with center catch.	\$265.00

MODEL CATALOG NO.	PAGE NO.	DESCRIPTION	PRICE
92T49	A-16	Diamond dial. Goldtone case. Black patterned dial set with one diamond. Moisture resistant. Dura-Crystal® Goldtone stainless steel mesh bracelet with center catch.	\$215.00
92T53	A-19	Goldtone case. Gilt textured dial. Water resistant to 3 ATM. Dura-Crystal® Goldtone link bracelet with center catch.	\$285.00
92T54	A-14	Diamond dial. Goldtone case and link bracelet. Black dial set with one diamond. Water resistant to 3 ATM. Dura-Crystal® Center catch.	\$315.00
92T55	A-19	Goldtone case. Gilt dial. Water resistant to 3 ATM. Dura-Crystal® Goldtone bracelet with brushed and polished links. Center catch.	\$285.00
92T56	A-14	Diamond dial. Goldtone case. Black enamel dial set with one diamond. Water resistant to 3 ATM. Dura-Crystal® Goldtone link bracelet with polished accents and center catch.	\$315.00
92T57	A-19	Goldtone case. Two-tone gilt dial. Moisture resistant. Dura-Crystal® Goldtone link bracelet with center catch.	\$350.00
92T58	A-33	Diamond dial. Goldtone case. Black dial set with one diamond. Moisture resistant. Dura-Crystal® Goldtone link bracelet with center catch.	\$375.00
92T59	A-20	Goldtone case. Gilt dial. Moisture resistant. Dura-Crystal® Goldtone textured mesh bracelet with center catch.	\$275.00
92T60	A-19	Goldtone case. Gilt stone-finish dial. Water resistant to 3 ATM. Dura-Crystal® Goldtone bark textured link bracelet with center catch.	\$285.00
92T61	A-14	Diamond dial. Goldtone case. Black dial set with one diamond. Water resistant to 3 ATM. Dura-Crystal® Matching bark textured link bracelet with center catch.	\$315.00
92T62	A-20	Goldtone case. Gilt dial. Moisture resistant. Dura-Crystal® Goldtone stainless steel link bracelet with center catch.	\$265.00
92T63	A-14	Diamond dial. Goldtone case. Black dial set with one diamond. Moisture resistant. Dura-Crystal® Goldtone stainless steel link bracelet with center catch.	\$285.00

MODEL CATALOG NO.	PAGE NO.	DESCRIPTION	PRICE
92T64	A-20	Goldtone case. Champagne dial. Moisture resistant. Dura-Crystal® Goldtone patterned link bracelet with center catch.	\$275.00
92T65	A-14	Diamond dial. Goldtone case. Black dial set with one diamond. Water resistant to 3 ATM. Dura-Crystal® Goldtone link bracelet with center catch.	\$315.00
92T66	A-23	Goldtone case with textured bezel top. Gilt waffle pattern dial. Moisture resistant. Dura-Crystal® Goldtone tapered mesh bracelet with center catch.	\$175.00
92T68	A-22	Goldtone case. Gilt patterned dial. Water resistant to 3 ATM. Dura-Crystal® Goldtone stainless steel bracelet with center catch.	\$195.00
92T69	A-22	Goldtone case with bright bezel ring. Champagne patterned dial. Moisture resistant. Dura-Crystal® Goldtone mesh bracelet with center catch.	\$185.00
92T72	A-20	Goldtone case. Gilt waffle patterned dial. Moisture resistant. Dura-Crystal® Goldtone brushed link bracelet with center catch.	\$265.00
92T73	A-15	Diamond dial. Goldtone case. Black waffle patterned dial set with one diamond. Moisture resistant. Dura-Crystal® Brushed goldtone link bracelet with center catch.	\$285.00
92T74	A-24	Goldtone case. Gilt patterned dial. Moisture resistant. Dura-Crystal® Goldtone stainless steel patterned bracelet with center catch.	\$160.00
92T75	A-17	Diamond dial. Goldtone case. Gilt patterned dial set with one diamond. Moisture resistant. Dura-Crystal® Goldtone stainless steel mesh bracelet with center catch.	\$185.00
92T76	A-35	Diamond dial. Goldtone case. Black enamel dial set with one diamond. Moisture resistant. Dura-Crystal® Goldtone stainless steel mesh bracelet with center catch.	\$195.00
92T77	A-19	Goldtone case. Gilt bark-patterned dial. Water resistant to 3 ATM. Dura-Crystal® Goldtone bark-and-polished solid link bracelet with center catch.	\$365.00
92T78	A-29	Goldtone case. Gilt dial. Moisture resistant. Dura-Crystal® Black leather strap.	\$150.00

POWER CELL GUIDE

FOR SPRING 1989 SUPPLEMENT ONLY

PLEASE NOTE: None of the model numbers listed below use more than one calibre. Therefore, the calibre number is not included.

MODEL #	CELL #
90B46	602
90C74	617
90E11	602
90F18	602
90F19	616
90F20	616
90F21	616
90F22	616
90F23	616
90F24	611
90F26	616
90G12	602
90G13	606
90H00	618
90H01	618
90H02	618
90L65	611
90L66	611
90L67	611
90N08	611
90N09	601
90S09	602
90S10	602
91A05	601
91G01	606
91S00	605
92A80	602
92A81	602
92B84	602
92D50	617
92D51	605
92E78	618
92E79	618
92E80	618
92E81	602
92F50	611
92F51	611
92F52	602
92F53	602
92F54	602
92F55	618
92F56	602

MODEL #	CELL #
92F57	602
92F58	618
92F59	618
92F61	616
92F62	602
92F63	611
92F64	611
92F65	611
92F66	611
92F67	616
92G17	606
92H51	611
92H52	611
92H55	618
92H56	602
92H57	602
92H58	616
92H59	616
92H60	616
92H61	616
92H62	616
92H63	611
92H64	622
92H65	622
92H67	611
92N99	605
92P40	611
92R00	601
92R05	611
92R06	602
92R07	601
92R09	602
92R10	611
92R11	611
92R12	601
92S19	617
92S20	602
92S21	602
92S22	605
92S23	617
92S24	602

SOME THINGS YOU SHOULD KNOW ABOUT THE WATCHES IN THIS CATALOG

1. ALL WATCHES SHOWN ARE SHOCK RESISTANT and meet the U.S. Government standard to withstand shock equal to a drop of three feet to a hardwood surface without substantial adverse effect.
2. All watches indicated as WATER-RESISTANT meet FTC standards of being capable at time of sale of enduring a test of submersion for five minutes under atmospheric pressure of 15 pounds per square inch and for five more minutes under additional pressure of 35 pounds per square inch without admitting any water. Ability to pass test assures that watch is protected against humid conditions and accidental immersion. Crystal, crown, and case must remain intact, so periodic checks are recommended.
3. BULOVA DURA-CRYSTAL® is a scratch-resistant mineral crystal offering maximum protection and distortion-free viewing.
4. All Day/Date models sold in U.S.A. have English/Spanish day discs. All Day/Date models sold in Canada have English/French day discs.
5. All Bulova watches are made with a stainless steel back.
6. All prices quoted are subject to change without notice.

BULOVA[®]

1988/89

Not so very long ago, the primary factor in selecting a watch was accuracy. Since quartz technology revolutionized timekeeping, accuracy is a taken-for-granted asset. Now fashion is foremost.

And foremost on the fashion scene is Bulova. Because Bulova gives you precisely what the buying public wants. Innovative styling. Exciting new features. Superior craftsmanship. And an overall selection, so wide and diverse that it caters to every taste, every life style, and every gift occasion.

Every minute of every day is special to someone. Bulova has been measuring the minutes of our lives, large and small, for over 100 years.

BULOVA®

TABLE OF CONTENTS

1. Signature Group	Pages 4-7
2. Ladies' Diamond Bracelets	Pages 8-18
A. Diamond Caresse®	Pages 12-13
3. Ladies' Fashion Bracelets	Pages 19-27
4. Ladies' Genuine Leather Straps	Pages 28-29
5. Duet Watches	Pages 30-49
A. Diamond Duets	Pages 30-35
B. Fashion Duets	Pages 36-44
C. Expansion Duets	Page 45
D. Genuine Leather Strap Duets	Pages 46-48
E. 20th Century Ltd.®	Page 49
6. Men's Diamond Bracelets	Pages 50-54
7. Men's Fashion Bracelets	Pages 55-66
A. Calendar Bracelets	Pages 58-61
B. Day/Date Bracelets	Pages 62-64
C. Marine Star™ Collection	Pages 65-66
8. Men's Speciality Watches	Pages 67-68
9. Men's Genuine Leather Straps	Pages 69-71
10. Water Resistant/Replacing Power Cells	Page 72
11. Power Cell Guide	Pages 73-75
12. Index	Pages 76-77
13. Notes	Page 78

SIGNATURE GROUP



Signature . . .

The couturier bracelet watch by Bulova. With the look of precious gold. Created for those customers who command attention and demand the best.

Signature . . .

Bulova's commitment to excellence. Incomparable in precision. Unique in design. Beautiful from every point of view. And water resistant to 3 atmospheres.

Signature . . .

Your answer to the ever-increasing consumer demand for elegant dress watches. With or without diamonds, the selection is superb.

Signature . . .

The watch that makes an important statement. With every handshake, every wave, every turn of the wrist. It's the hallmark of achievement the signature of success.



92P23



92H11



92P21



92H09



92P22



92N65

92N66



92F06

SIGNATURE



92N63



92F04



92N97



92F49



92N64



92N98

E GROUP



90N02



90F02



90N01



90F01

Ladies' Diamond Bracelets

BULL



90T08



90T05



90F11



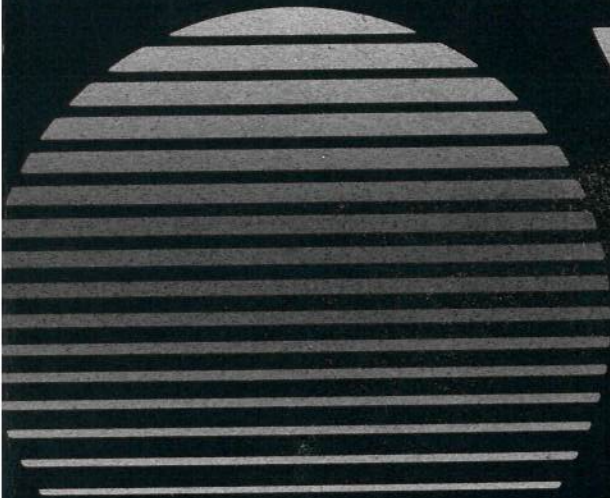
90L59



90L58



90L60



VWA



90T06



90F09



90F10



92J37



90F13



90T09



92J36

Ladies' Diamond Bracelets

BU



90F07



90F08



90F14



92J34



90F16



90F17



90F15



90T07

VVA



92K71



90F04



90F05



90F06

BULL



90L57



90L56



92L78



90L55



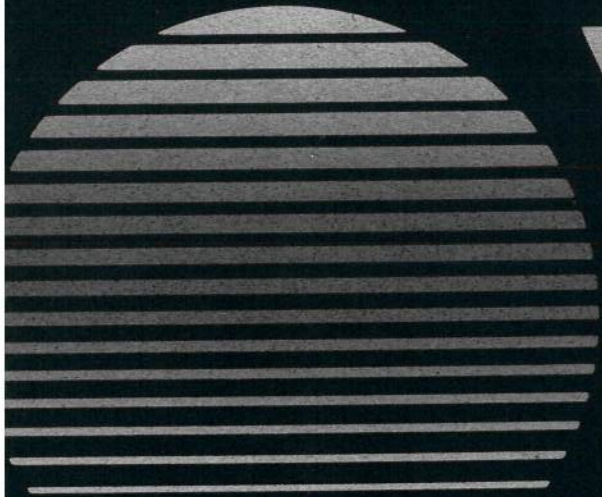
92K69



92L77



90L53



VVA



90L54



92K68



90L52



92J30



92L73



91L09

Ladies' Diamond Bracelets

BULL



92T54



92T56



92T61



92T65



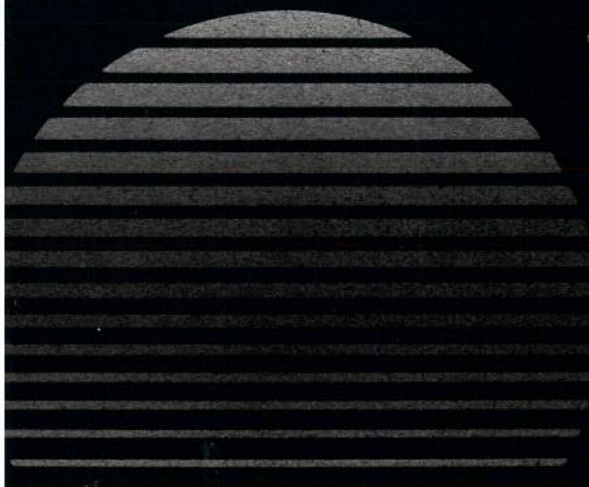
92J12



92J13



92T63



VVA



92T73



92F21



92F34



92T43



92F18



92F20

Ladies' Diamond Bracelets

BULL



92F19



92F32



92F33



92T32



92T49



92F24



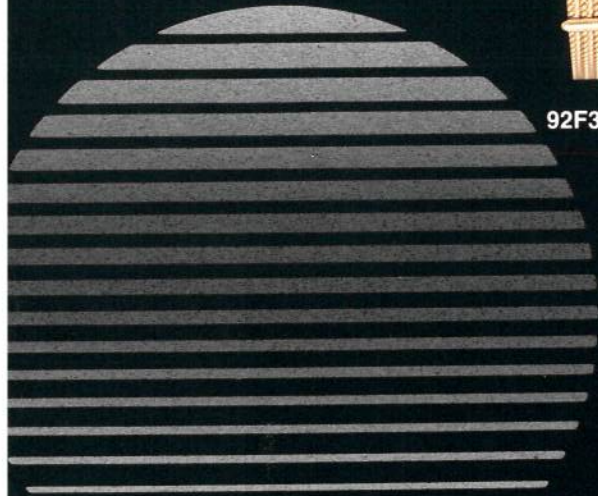
92J82



92F35



92T75



VVA



92J80



92J81



92K74



92K75



92J57

Ladies' Diamond Bracelets

BU



92F12



92F13



92F23



92J79



92F30

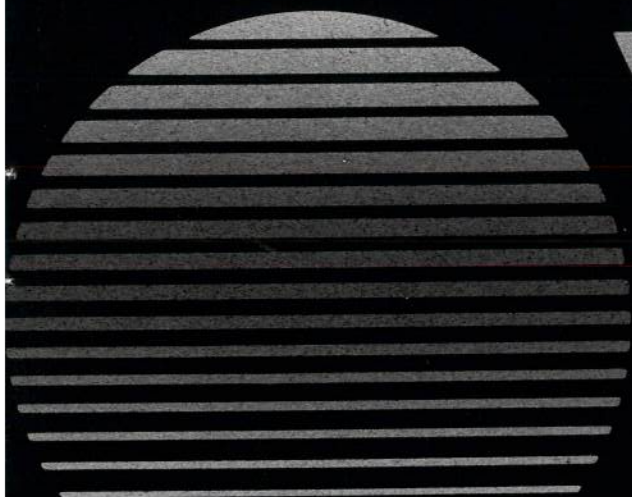


92F39



92F40

Ladies' Fashion Bracelets



92T77



92T57



92H05



92T53



92T55



92T60

Ladies' Fashion Bracelets

BUILL



92T38



92T59



92T62



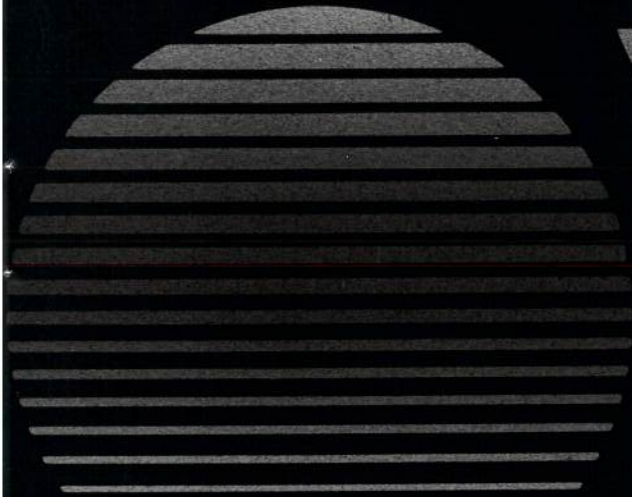
92T64



92T72



92H25



VVA



92H45



92H47



92J86



92H23



92H19



92H24

Ladies' Fashion Bracelets

BUUL



92H43



92H44



92T68



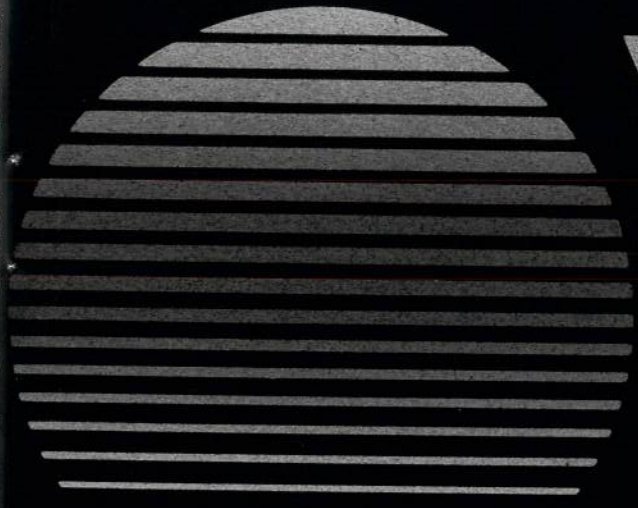
92H16



92T69



92H40



VIVA



92J06



92J50



92J71



92H17



92T66



92H18



92H46

Ladies' Fashion Bracelets

BUULL



92T74



92J04



92T36



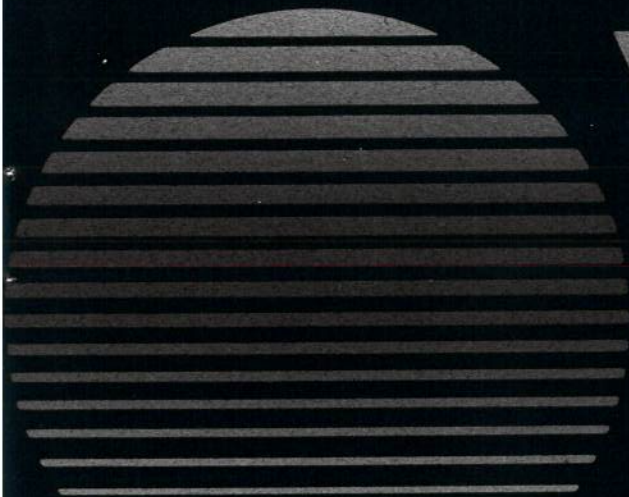
92E30



92J45



92J92



92E43



92H15

VVA



90E09



92E70



92E71



90E10



92E61

Ladies' Fashion Bracelets

BULL



92H38



92H39



92H41



92E62



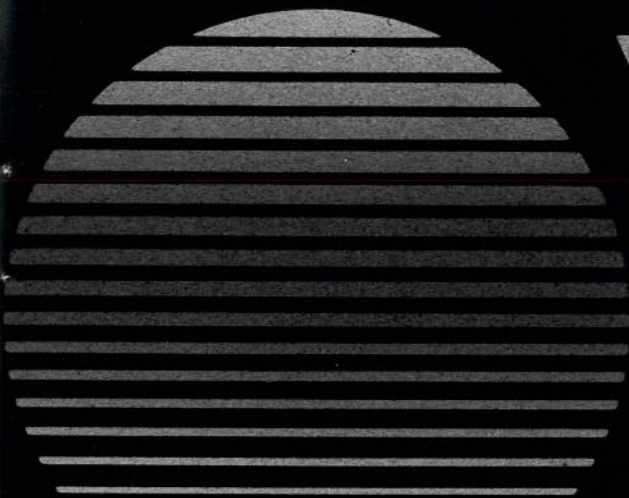
92E67



92J91



92E66



VVA



91L13



91L14



91L08



91E03



91L11



91E04



91E06



91L12

Ladies' Genuine Leather Straps

BULL



90F03



92J95



92F01



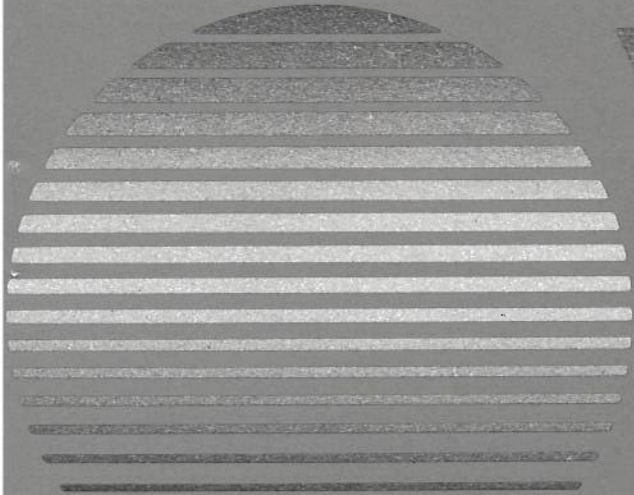
92J96



92J93



92J94



92T78

VVA



92E47



92H07



92K91



92K22

Diamond Duets

BULOVA



92M73



92J73



92N67



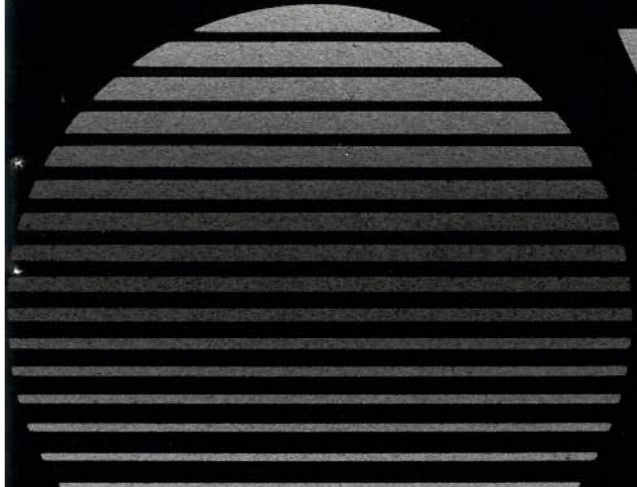
90T10



90N05



90F12



92N51



92J51



92N81



92F25



92N85



92F36

Diamond Duets

BUUL



92N89



92F38



92F37



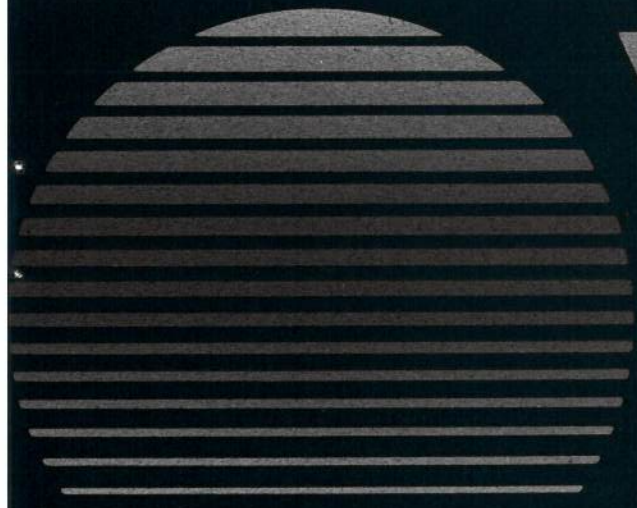
92N84



92N53



92J99



VWA



92N41



92T58



92M51



92M76



92K38



92J76

Diamond Duets

BUL



92N78



92F22



92N47



92J87



92N90



92F41



92N88

92F42

VVA



92N43



92J85



92N72



92T76

Fashion Duets

BULL



92P32



92H27



92P38



92H48



92P37



92H49



92P39



92H50

VWA



92M38



92K44



92M75



92J75

Fashion Duets

BUL



92A70



92E63



92S00



92H26

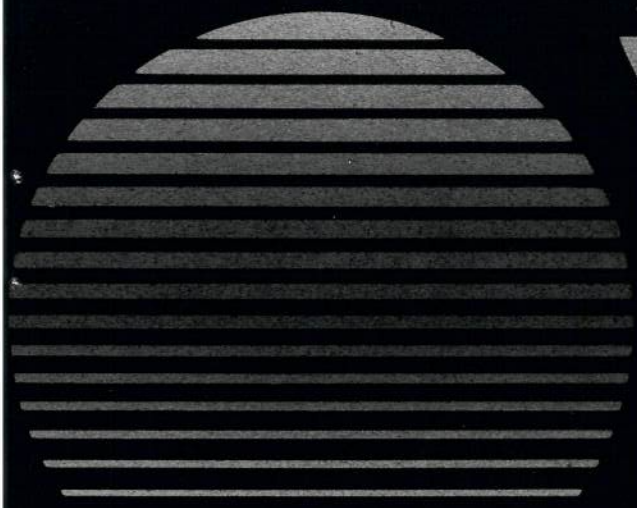


92B50



92G13

Classic® Collection



VVA



92P30



92H21



92P31



92H22

BULL



92B78



92H35



92B76



92H32



90L62



90B44

Fashion Duets



92B77



92H33



90B45



90L63



90M17



90L50

Fashion Duets

BUL



90B40



90L61



92B68



92H12



92P17



92H04



VIA



92S13



92E64



90S06



90E07

Fashion Duets

BUL



92S15



92G16



92S16



92G15



92B67



92E55

Expansion Duets



92S12



92E65



90S05



90E08



92D32



92E44



91C17



91E07

Genuine Leather Strap Duets

BUL



90M11



90L33



92A47



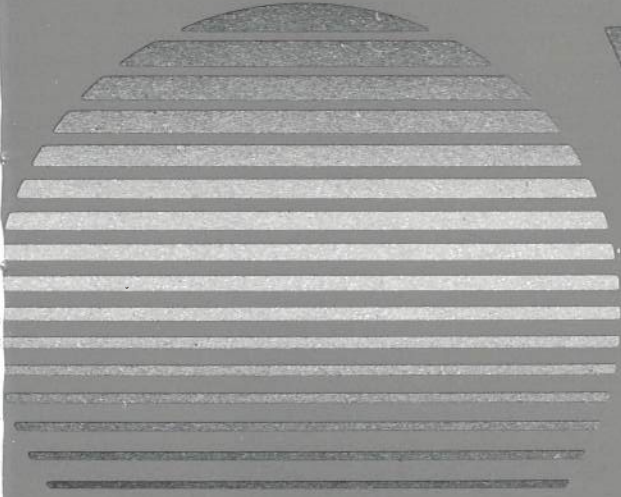
92E53



92A48



92E54



92A43



92E49

VIVA



92P28



92H14



92S09



92G14

Genuine Leather Strap Duets

BULOVA



92S10



92H36



90M19



90L64



92P35

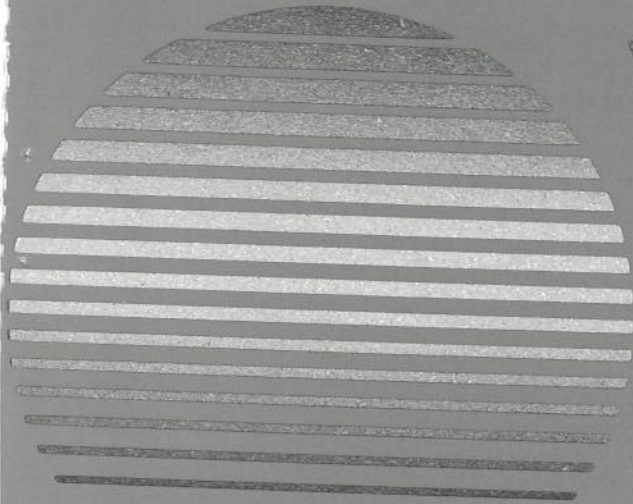


92H37

20th Century Ltd.®



92A73



VVA



92A74



92A75



92A76

Men's Diamond Bracelets

BULOV



92N55



92M90



90M05



90N04



92M89



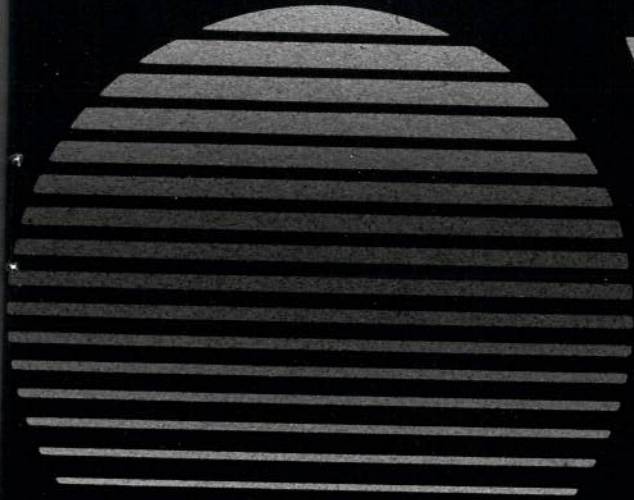
90M07



92N54



92N39



90N06



92N45



92N80



92N40

Men's Diamond Bracelets

BULOVA



92N44



92N38



92N33



92N32



92N79



92N69



92N37

VIVA



92A27



92N71



92M64



92N35

Men's Diamond Bracelets

BULL



92N36



92N70



92N68

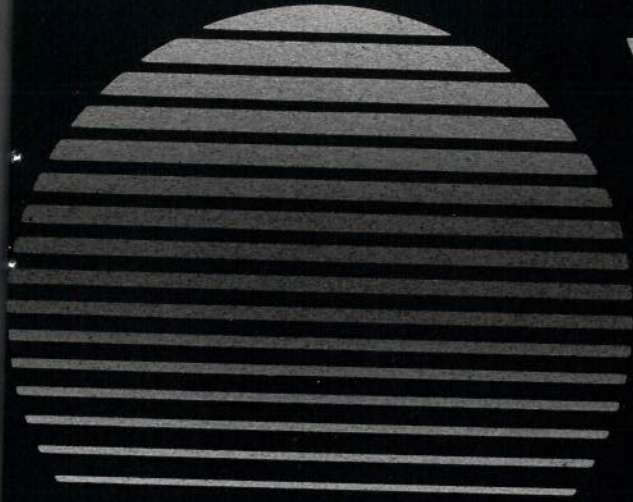


92N86



92N87

Men's Fashion Bracelets



92P09



92P34



92M79



92P10



92P08

Men's Fashion Bracelets

92M99



92M96



BULOVA



92P33



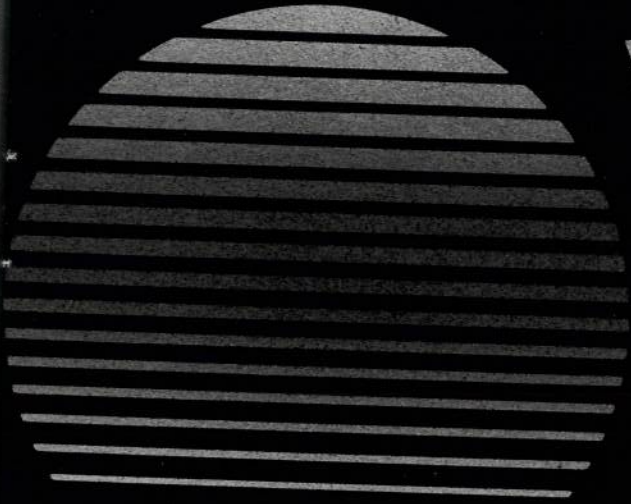
90M20



92P16



90M21



92P26



92M98

VIVA



92P25



92P13



92P24

Men's Calendar Bracelets

92S03



90B29



90S01



91B18

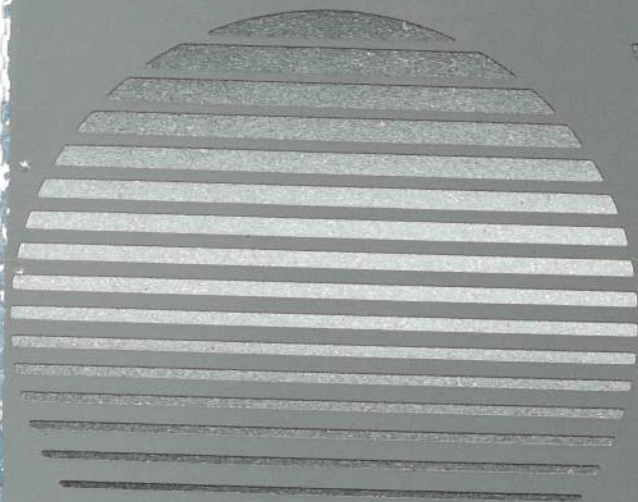


92S14



90S07

BULOVA



90B32

92B55



90S04



90B39



92B63



92B66



Men's Calendar Bracelets

BULOVA



92S04



92B64



92S05



92S01



90S00

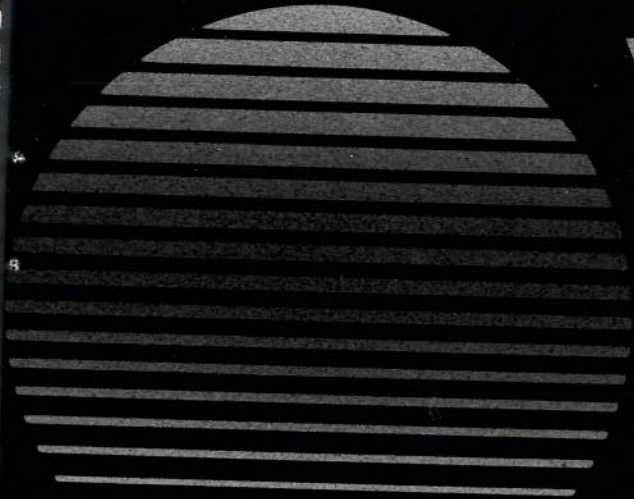


92B54



92S02

92B75



92B74



90B43



92B53



92B15

Men's Day/Date Bracelets

BULL



90C70



92D44



92D23



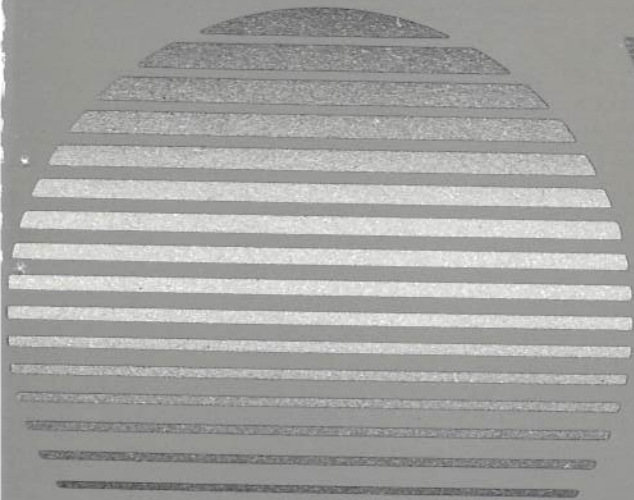
90D01



92D34



92D29



92D42



90D00

VVA



91C15



92D33



92D28



92D43

Men's Day/Date Bracelets

BUL



92D30



92D24



90C68



90C67

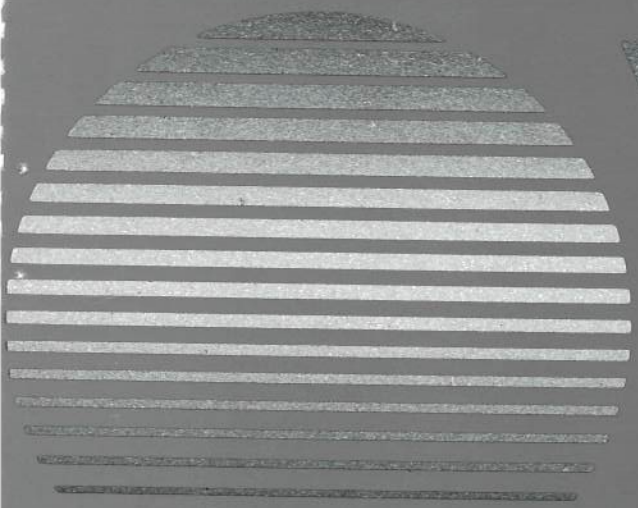


91C13



91C16

Marine Star™ Collection



90A07



92D45



90S02



90B38



90S03

Marine Star™ Collection

BUL



92D36



90B27



90C64



90C72



92D25



91C18

Men's Specialty Watches

Railroad Approved

92D26



91C06



92D47



92D38



92D46



92D39

Multi-Functional

Men's Specialty Watches

Expansion Bracelets

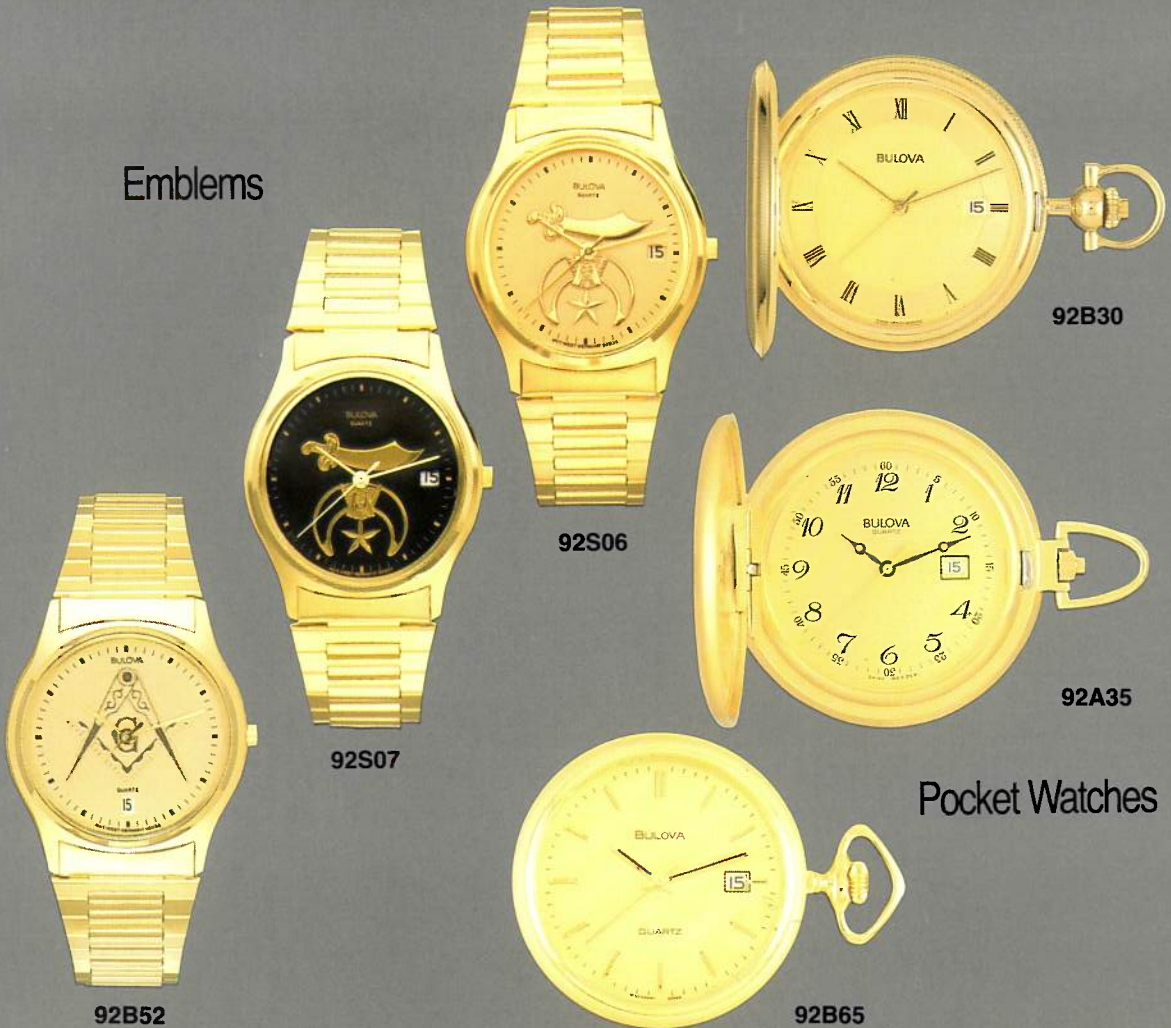


92D37



92B73

Emblems



92S06

92B30

92A35

92S07

92B52

Pocket Watches



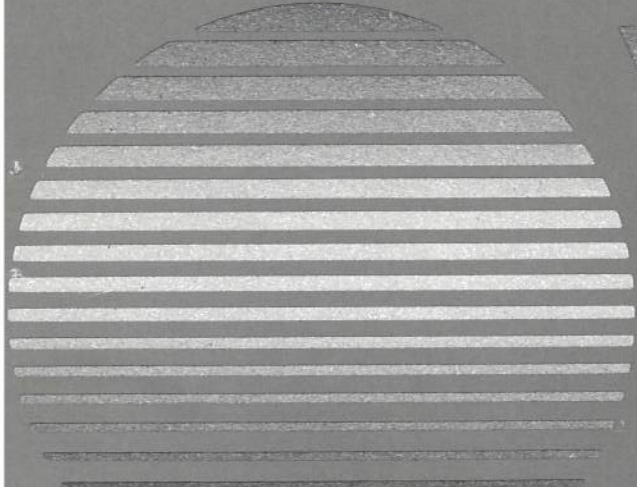
92B65

Men's Genuine Leather Straps

90N07



92N56



92N59



92N52



92N48



92N49

Men's Genuine Leather Straps

BULOVA



92A42



91M00



92B49



92A37



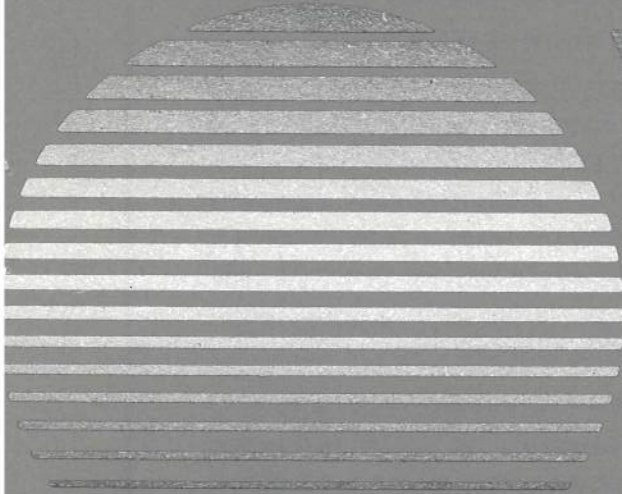
92A40



90B37



92A45



92A36



90A06

VIVA



90B23



92D41



92S08



91C20



92D40

PROPER USE AND CARE OF WATER-RESISTANT WATCHES

Almost all Bulova quartz watches are water protected and meet Federal Trade Commission standards. Watches designed for deep sea and underwater use face even more stringent tests to meet those specific FTC rules.

A small portion of Bulova quartz watches, created primarily for dress wear, do not have the essential seals and gaskets and are categorized as **NON** water-resistant.

Water-resistant Bulova quartz watches are easily identified by the words "**WATER RESISTANT**" on the dial or etched on the back of the case. With the super water-resistant Deep Sea models or divers' watches, the depth-tested maximum (330 or 660 feet) will appear on the watch dial and/or case back.

Water-resistancy varies with each type of watch. Caution your customer accordingly:

NON WATER-RESISTANT: Avoid all contact with water. Remove watch from wrist before washing, showering or doing dishes, etc. Shield against rain. If condensation occurs, simply warm the crystal by covering it with your hand. If "fogging"

remains, store the watch for a day or two in a warm, dry place.

WATER-RESISTANT: Capable of withstanding all ordinary moisture involved in daily use. Protected against **ACCIDENTAL** exposure or immersion in water. If wet, wipe dry **IMMEDIATELY**. Wipe with a clean, moist cloth if in contact with salt water. Do not wear when showering or swimming.

DEEP SEA MODELS: Water-resistant to a depth of 330 feet/10 ATM or 660 feet/20 ATM. Designed for wear while swimming, skin-diving, scuba-diving, snorkeling, etc., **PROVIDED** case, crystal and crown remain intact and case has been unopened. Should be checked at least once a year by a competent watch repair technician to ensure that water resistancy is at its optimum.

SCREW-DOWN CROWN MODELS: In order to insure water-resistancy on screw-down crown models, the following precautions must be taken: To set watch, turn crown towards you until threads disengage, then set watch. To reseal, press crown in and turn away from you until threads engage and until crown is tight.

PRECAUTIONS TO TAKE WHEN REPLACING POWER CELLS

The retailer who provides an efficient battery replacement service can command greater in-store traffic, repeat customers, increased sales and profits . . . provided his personnel are trained to do the job properly. The procedure is comparatively simple, but precautions must be taken to avoid any replacement problems:

1. **MAKE SURE THE WORK AREA IS IMMACULATE**, totally free of dust, dirt, grime and metallic slivers, **BEFORE** you open the watch case. Should any such residue enter the case, it could cause movement stoppage.
2. **REMOVE EXHAUSTED POWER CELLS AS SOON AS POSSIBLE** to prevent leakage and damage to the movement or dial. This applies not only to your customer's watch, but to stock watches as well.
3. **CAUTION YOUR CUSTOMER TO HAVE POWER CELLS REMOVED** if the watch is to be stored away for any extensive length of time.
4. **ALWAYS HANDLE POWER CELLS WITH A PLASTIC TWEEZER**. A metal tweezer can cause accidental short circuiting or power cell drain.
5. **ALWAYS USE THE MANUFACTURER'S RECOMMENDED POWER CELL**; substitute cells may cause malfunction or damage to the watch. If a watch functions on **TWO** power cells, replace both at the same time. Test the new batteries for proper voltage.

POWER CELL GUIDE

PLEASE NOTE: Model number is repeated when more than one calibre with different power cell is used. A missing calibre number indicates that only the listed power cell number is used.

MODEL #	CALIBRE #	BULOVA CELL #
90A06		602
90A07		613
90B23		605
90B27		605
90B29		605
90B32	6146.17	617
"	6246.17	602
90B37		602
90B38		605
90B39		602
90B40		614
90B43		605
90B44		605
90B45		605
90C64		605
90C67	2823.27	610
"	6093.10	605
"	6213.17	605
"	2823.47	610
90C68		605
90C70		605
90C72	6283.17	605
"	6363.17	602
90D00		605
90D01		605
90E07		602
90E08		602
90E09		602
90E10		602
90F01		611
90F02		611
90F03		616
90F04		616
90F05		616
90F06		616
90F07		616
90F08		616
90F09		616
90F10		616
90F11		616
90F12		611
90F13		616
90F14		616
90F15		611
90F16		611
90F17		616
90L33		611
90L50		611
90L52		602
90L53		602
90L54		602
90L55		602

MODEL #	CALIBRE #	BULOVA CELL #
90L56		602
90L57		602
90L58		611
90L59		611
90L60		611
90L61		602
90L62		611
90L63		611
90L64		611
90M05		611
90M07		611
90M11		611
90M17		611
90M19		601
90M20		611
90M21		611
90N01	6170.27	611
"	6250.17	616
90N02		616
90N04		616
90N05		611
90N06		611
90N07		602
90S00	6052.27	614
"	6442.17	611
90S01		602
90S02		605
90S03		605
90S04		605
90S05		605
90S06		605
90S07		605
90T05	6170.27	611
"	6060.17	616
90T06		611
90T07		616
90T08		611
90T09		611
90T10		611
91B18		602
91C06		605
91C13	2823.27	610
"	2823.47	610
"	6213.17	605
91C15		605
91C16		605
91C17		605
91C18		610
91C20		605
91E03	6101.17	602
"	6151.20	618
91E04		602

MODEL #	CALIBRE #	BULOVA CELL #
91E06		618
91E07		602
91L08		611
91L09		611
91L11		611
91L12		611
91L13		611
91L14		611
91M00		611
92A27		617
92A35		605
92A36	6121.17	617
"	6051.17	614
"	6051.27	614
92A37	6051.17	614
"	6121.17	617
92A40		602
92A42		602
92A43		611
92A45		602
92A47		602
92A48		602
92A70		616
92A73		602
92A74		602
92A75		602
92A76		602
92B15		605
92B30		610
92B49		602
92B50		605
92B52		605
92B53		605
92B54		605
92B55		605
92B63		602
92B64		602
92B65		605
92B66		602
92B67		617
92B68		614
92B73		617
92B74		605
92B75		605
92B76		605
92B77		605
92B78		602
92D23		605
92D24	2823.27	610
"	2823.47	610
"	6213.17	605
92D25		605

POWER CELL GUIDE

MODEL #	CALIBRE #	BULOVA CELL #
92D26		605
92D28		605
92D29		605
92D30		605
92D32		605
92D33		605
92D34		605
92D36	6283.17	605
"	6363.17	602
92D37		617
92D38		605
92D39		605
92D40		605
92D41		605
92D42		605
92D43		605
92D44		605
92D45		605
92D46		606
92D47		606
92E30	6101.17	602
"	6151.20	618
92E43		618
92E44		602
92E47		611
92E49		611
92E53		602
92E54		602
92E55		618
92E61		602
92E62		602
92E63		616
92E64		602
92E65		602
92E66		602
92E67		602
92E70		602
92E71		602
92F01		611
92F04		611
92F06		611
92F12		611
92F13		611
92F18		616
92F19		611
92F20		616
92F21		616
92F22		602
92F23		611
92F24		616
92F25		616
92F30		618
92F32		616
92F33		616
92F34		616
92F35		618
92F36		611

MODEL #	CALIBRE #	BULOVA CELL #
92F37		611
92F38		611
92F39		611
92F40		602
92F41		601
92F42		601
92F49		611
92G13		602
92G14		602
92G15		602
92G16		602
92H04		611
92H05		611
92H07	6200.17	611
"	2810.27	602
92H09		611
92H11		611
92H12		602
92H14		616
92H15		611
92H16		616
92H17		616
92H18		616
92H19		616
92H21		611
92H22		611
92H23		611
92H24		616
92H25		616
92H26		602
92H27		616
92H32		611
92H33		611
92H35		611
92H36		611
92H37		611
92H38		611
92H39		611
92H40		616
92H41		618
92H43		616
92H44		616
92H45		616
92H46		618
92H47		616
92H48		611
92H49		611
92H50		611
92J04	6030.27	611
"	6200.17	611
"	2810.27	602
92J06		611
92J12		611
92J13		611
92J30		611
92J34		611
92J36		611

MODEL #	CALIBRE #	BULOVA CELL #
92J37		611
92J45		602
92J50		611
92J51		602
92J57	6200.17	611
"	6030.27	611
"	2810.27	602
92J71		616
92J73		611
92J75	2810.27	602
"	2980.27	611
"	6200.17	611
92J76	2810.27	602
"	2980.27	611
92J79		602
92J80		602
92J81		602
92J82		616
92J85		611
92J86		611
92J87		611
92J91		611
92J92		602
92J93		616
92J94		616
92J95		616
92J96		611
92J99		611
92K22	2810.27	602
"	6200.17	611
92K38		602
92K44		602
92K68	2810.27	602
"	2910.17	602
"	2750.10	611
"	6200.27	611
92K69	2810.27	602
"	2910.17	602
"	2750.10	611
"	6200.17	611
92K71	2810.27	602
"	2910.17	602
"	2750.10	611
92K74	6030.17	611
"	6200.17	611
"	6200.27	611
"	2810.27	602
92K75	6030.17	611
"	6200.17	611
"	2810.27	602
92K91		616
92L73	2810.27	602

POWER CELL GUIDE

MODEL #	CALIBRE #	BULOVA CELL #
92L73	2910.17	602
"	6200.27	611
92L77	2810.27	602
"	2810.10	602
"	2910.17	602
"	6200.17	611
92L78	2810.10	602
"	2910.17	602
"	6200.27	611
"	6200.17	611
92M38		602
92M51	6200.17	611
"	6200.27	611
"	2810.27	602
92M64		611
92M73		611
92M75		611
92M76	2810.27	602
"	2980.27	611
"	6200.17	611
92M79		611
92M89		611
92M90		611
92M96	2810.27	602
"	6200.17	611
92M98		601
92M99		611
92N32	2810.27	602
"	2910.27	602
"	6200.17	611
92N33	2810.27	602
"	6200.17	611
92N35		601
92N36		601
92N37		601
92N38	2810.27	602
"	6200.17	611
92N39	2810.27	602
"	6200.17	611
92N40	2810.27	602
"	6200.17	611
92N41		611
92N43		611
92N44	2810.27	602
"	6200.17	611
92N45		601
92N47		601
92N48		601
92N49		601
92N51		617
92N52		601
92N53	2810.27	602
"	6200.17	611
92N54	2810.27	602
"	6200.17	611
92N55	2810.27	602
"	6200.17	611

MODEL #	CALIBRE #	BULOVA CELL #
92N56		602
92N59		611
92N63	6250.17	616
"	6170.27	611
92N64	6250.17	616
"	6170.27	611
92N65		616
92N66	6250.17	616
"	6170.27	611
92N67		611
92N68		611
92N69		611
92N70		611
92N71	2810.27	602
"	6200.17	611
92N72	2810.27	602
"	6200.17	611
92N78		602
92N79		611
92N80		611
92N81	6250.17	616
"	6170.27	611
92N84		611
92N85		611
92N86		602
92N87		602
92N88		601
92N89		611
92N90		601
92N97		611
92N98		611
92P08	2810.27	602
"	6200.17	611
92P09		611
92P10	2810.27	602
"	6200.17	611
92P13		601
92P16		611
92P17		611
92P21	6250.17	616
"	6170.27	611
92P22		616
92P23	6250.17	616
"	6170.27	611
92P24		602
92P25		602
92P26	2810.27	602
"	6200.17	611
92P28		614
92P30		611
92P31		611
92P32		616
92P33		611
92P34		611
92P35		611
92P37		611
92P38		611

MODEL #	CALIBRE #	BULOVA CELL #
92P39		611
92S00		605
92S01		614
92S02		617
92S03		602
92S04		614
92S05		605
92S06		605
92S07		605
92S08		605
92S09		605
92S10		602
92S12		605
92S13		605
92S14		605
92S15		605
92S16		605
92T32		611
92T36		616
92T38		611
92T43		611
92T49		616
92T53	6170.27	611
"	6060.17	616
92T54	6170.27	611
"	6060.17	616
92T55		611
92T56		611
92T57	6170.27	611
"	6260.17	616
92T58	6170.27	611
"	6260.17	616
92T59		611
92T60		611
92T61		611
92T62	6170.27	611
"	6260.17	616
92T63	6170.27	611
"	6260.17	616
92T64		616
92T65		611
92T66		616
92T68		611
92T69		616
92T72		611
92T73		611
92T74		616
92T75		616
92T76		611
92T77		611
92T78		616

INDEX

MODEL #	PAGE #
90A06	71
90A07	65
90B23	71
90B27	66
90B29	58
90B32	59
90B37	70
90B38	65
90B39	59
90B40	42
90B43	61
90B44	40
90B45	41
90C64	66
90C67	64
90C68	64
90C70	62
90C72	66
90D00	63
90D01	62
90E07	43
90E08	45
90E09	25
90E10	25
90F01	7
90F02	7
90F03	28
90F04	11
90F05	11
90F06	11
90F07	10
90F08	10
90F09	9
90F10	9
90F11	8
90F12	30
90F13	9
90F14	10
90F15	11
90F16	10
90F17	10
90L33	46
90L50	41
90L52	13
90L53	12
90L54	13
90L55	12
90L56	12
90L57	12
90L58	8
90L59	8

MODEL #	PAGE #
90L60	8
90L61	42
90L62	40
90L63	41
90L64	48
90M05	50
90M07	50
90M11	46
90M17	41
90M19	48
90M20	56
90M21	56
90N01	7
90N02	7
90N04	50
90N05	30
90N06	51
90N07	69
90S00	60
90S01	58
90S02	65
90S03	65
90S04	59
90S05	45
90S06	43
90S07	58
90T05	8
90T06	9
90T07	11
90T08	8
90T09	9
90T10	30
91B18	58
91C06	67
91C13	64
91C15	63
91C16	64
91C17	45
91C18	66
91C20	71
91E03	27
91E04	27
91E06	27
91E07	45
91L08	27
91L09	13
91L11	27
91L12	27
91L13	27
91L14	27
91M00	70

MODEL #	PAGE #
92A27	53
92A35	68
92A36	71
92A37	70
92A40	70
92A42	70
92A43	47
92A45	70
92A47	46
92A48	46
92A70	38
92A73	49
92A74	49
92A75	49
92A76	49
92B15	61
92B30	68
92B49	70
92B50	38
92B52	68
92B53	61
92B54	60
92B55	59
92B63	59
92B64	60
92B65	68
92B66	59
92B67	44
92B68	42
92B73	68
92B74	61
92B75	61
92B76	40
92B77	41
92B78	40
92D23	62
92D24	64
92D25	66
92D26	67
92D28	63
92D29	62
92D30	64
92D32	45
92D33	63
92D34	62
92D36	66
92D37	68
92D38	67
92D39	67
92D40	71
92D41	71

MODEL #	PAGE #
92D42	63
92D43	63
92D44	62
92D45	65
92D46	67
92D47	67
92E30	24
92E43	25
92E44	45
92E47	29
92E49	47
92E53	46
92E54	46
92E55	44
92E61	25
92E62	26
92E63	38
92E64	43
92E65	45
92E66	26
92E67	26
92E70	25
92E71	25
92F01	28
92F04	6
92F06	6
92F12	18
92F13	18
92F18	15
92F19	16
92F20	15
92F21	15
92F22	34
92F23	18
92F24	16
92F25	31
92F30	18
92F32	16
92F33	16
92F34	15
92F35	17
92F36	31
92F37	32
92F38	32
92F39	18
92F40	18
92F41	34
92F42	35
92F49	6
92G13	38
92G14	47

INDEX

MODEL #	PAGE #
92G15	44
92G16	44
92H04	42
92H05	19
92H07	29
92H09	5
92H11	5
92H12	42
92H14	47
92H15	25
92H16	22
92H17	23
92H18	23
92H19	21
92H21	39
92H22	39
92H23	21
92H24	21
92H25	20
92H26	38
92H27	36
92H32	40
92H33	41
92H35	40
92H36	48
92H37	48
92H38	26
92H39	26
92H40	22
92H41	26
92H43	22
92H44	22
92H45	21
92H46	23
92H47	21
92H48	36
92H49	36
92H50	37
92J04	24
92J06	23
92J12	14
92J13	14
92J30	13
92J34	10
92J36	9
92J37	9
92J45	24
92J50	23
92J51	31
92J57	17
92J71	23

MODEL #	PAGE #
92J73	30
92J75	37
92J76	33
92J79	18
92J80	17
92J81	17
92J82	16
92J85	35
92J86	21
92J87	34
92J91	26
92J92	24
92J93	28
92J94	28
92J95	28
92J96	28
92J99	32
92K22	29
92K38	33
92K44	37
92K68	13
92K69	12
92K71	11
92K74	17
92K75	17
92K91	29
92L73	13
92L77	12
92L78	12
92M38	37
92M51	33
92M64	53
92M73	30
92M75	37
92M76	33
92M79	55
92M89	50
92M90	50
92M96	56
92M98	57
92M99	56
92N32	52
92N33	52
92N35	53
92N36	54
92N37	53
92N38	52
92N39	51
92N40	51
92N41	33
92N43	35

MODEL #	PAGE #
92N44	52
92N45	51
92N47	34
92N48	69
92N49	69
92N51	31
92N52	69
92N53	32
92N54	51
92N55	50
92N56	69
92N59	69
92N63	6
92N64	7
92N65	5
92N66	6
92N67	30
92N68	54
92N69	52
92N70	54
92N71	53
92N72	35
92N78	34
92N79	52
92N80	51
92N81	31
92N84	32
92N85	31
92N86	54
92N87	54
92N88	35
92N89	32
92N90	34
92N97	6
92N98	7
92P08	55
92P09	55
92P10	55
92P13	57
92P16	56
92P17	42
92P21	5
92P22	5
92P23	5
92P24	57
92P25	57
92P26	57
92P28	47
92P30	39
92P31	39
92P32	36

MODEL #	PAGE #
92P33	56
92P34	55
92P35	48
92P37	36
92P38	36
92P39	37
92S00	38
92S01	60
92S02	61
92S03	58
92S04	60
92S05	60
92S06	68
92S07	68
92S08	71
92S09	47
92S10	48
92S12	45
92S13	43
92S14	58
92S15	44
92S16	44
92T32	16
92T36	24
92T38	20
92T43	15
92T49	16
92T53	19
92T54	14
92T55	19
92T56	14
92T57	19
92T58	33
92T59	20
92T60	19
92T61	14
92T62	20
92T63	14
92T64	20
92T65	14
92T66	23
92T68	22
92T69	22
92T72	20
92T73	15
92T74	24
92T75	17
92T76	35
92T77	19
92T78	29

BULOVA[®]

IN THE UNITED STATES

BULOVA CORPORATION
A Subsidiary of Loews Corporation
One Bulova Avenue
Woodside, New York 11377

BULOVA HOTLINE
9 am to 5 pm Eastern Time
1-800-A BULOVA
In New York, Call:
1-718-204-3309

IN CANADA

BULOVA WATCH COMPANY, LTD.
A Subsidiary of Loews Corporation
105 Bartley Drive
Toronto, Ontario, Canada M4A 1C8

BULOVA HOTLINE
1-800-268-6562
- or -
416-751-7151